

Soliris® (eculizumab) is the **FIRST AND ONLY** FDA-approved complement inhibitor indicated for the treatment of adults with anti-aquaporin-4 (AQP4) antibody-positive neuromyelitis optica spectrum disorder (NMOSD).<sup>1</sup>

#### RESULTS FROM THE PREVENT STUDY

Soliris was superior to placebo based on time to first adjudicated on-trial relapse (primary endpoint).<sup>1</sup>

**94%** reduction in risk of relapse in patients treated with Soliris compared to placebo (HR=0.058;  $P<0.0001$ ).<sup>1</sup>

SHE IS ONE OF  
THE **98%**

of patients treated with Soliris who were relapse-free at 48 weeks vs 63% with placebo.<sup>1,2</sup>

#### STUDY DESIGN<sup>1,2</sup>

PREVENT (Prevention of Relapses in Neuromyelitis Optica): Phase 3, randomized, double-blind, placebo-controlled study evaluating the efficacy and safety of Soliris in patients with anti-AQP4 antibody-positive NMOSD who received Soliris (N=96) or placebo (N=47).

Abbreviation: HR, hazard ratio.

This is a hypothetical patient.

## SELECT IMPORTANT SAFETY INFORMATION

### WARNING: SERIOUS MENINGOCOCCAL INFECTIONS

Life-threatening and fatal meningococcal infections have occurred in patients treated with Soliris and may become rapidly life-threatening or fatal if not recognized and treated early.

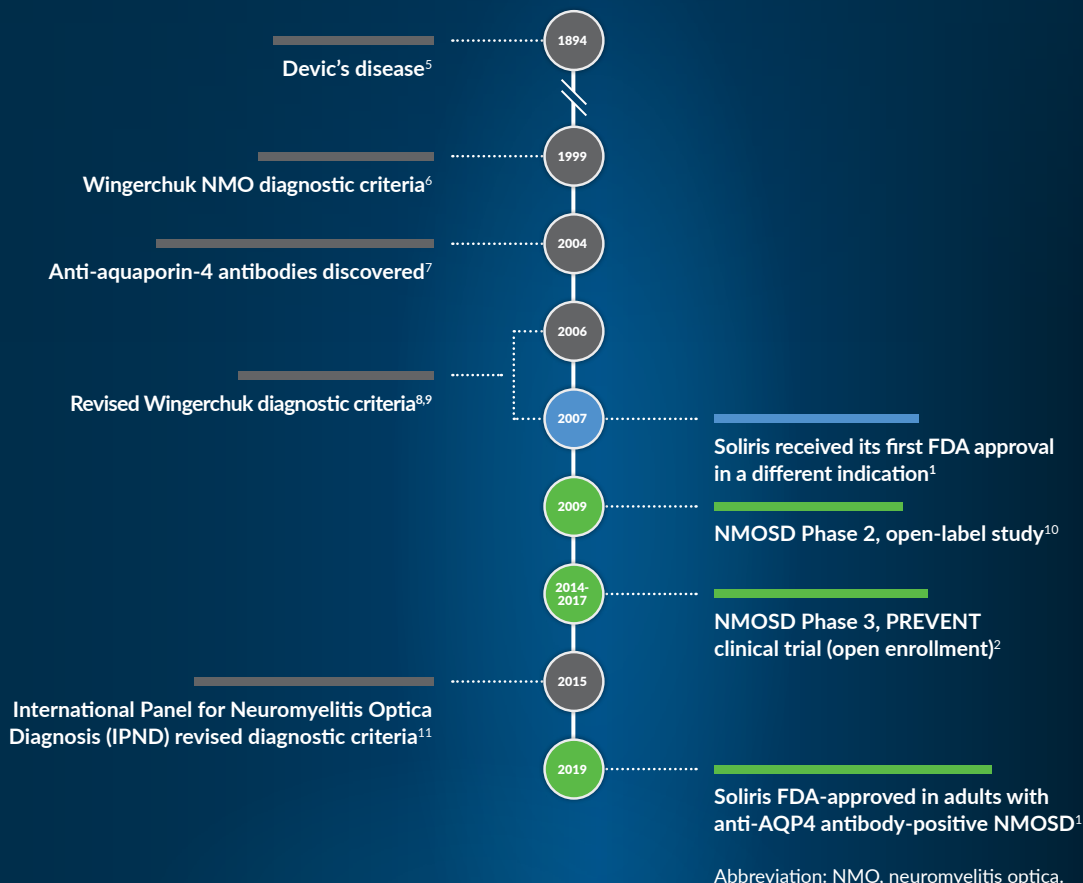
- Comply with the most current Advisory Committee on Immunization Practices (ACIP) recommendations for meningococcal vaccination in patients with complement deficiencies.
- Immunize patients with meningococcal vaccines at least 2 weeks prior to administering the first dose of Soliris, unless the risks of delaying Soliris therapy outweigh the risk of developing a meningococcal infection. (See *Serious Meningococcal Infections* for additional guidance on the management of the risk of meningococcal infection).
- Vaccination reduces, but does not eliminate, the risk of meningococcal infections. Monitor patients for early signs of meningococcal infections and evaluate immediately if infection is suspected.

Soliris is available only through a restricted program under a Risk Evaluation and Mitigation Strategy (REMS). Under the Soliris REMS, prescribers must enroll in the program. Enrollment in the Soliris REMS program and additional information are available by telephone: 1-888-SOLIRIS (1-888-765-4747) or at [www.solirisrems.com](http://www.solirisrems.com).

Please see Important Safety Information throughout and accompanying full Prescribing Information, including Boxed WARNING regarding serious meningococcal infections.

**SOLIRIS**<sup>®</sup>  
(eculizumab)  
Injection for Intravenous Use  
300 mg/30 mL vial

# A legacy built on history and science



## Soliris is an established therapy across multiple indications



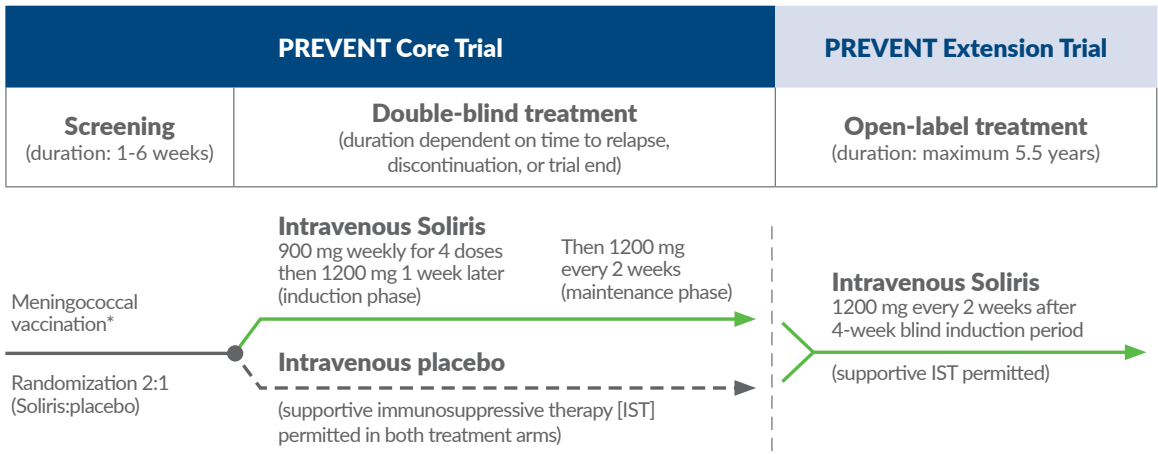
Please see Important Safety Information throughout and accompanying full Prescribing Information, including Boxed WARNING regarding serious meningococcal infections.



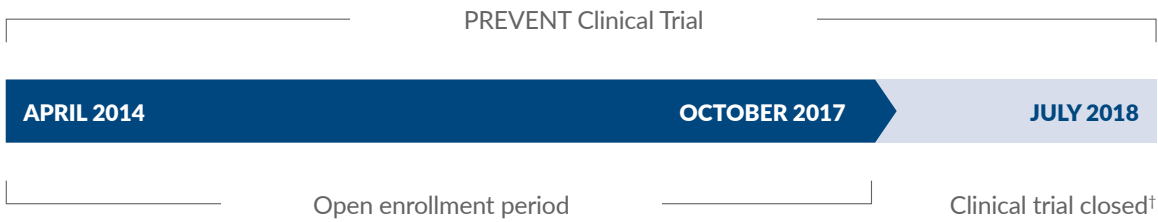
# Soliris® (eculizumab) was studied in PREVENT in patients with anti-AQP4 antibody-positive NMOSD from April 2014 to July 2018<sup>2-4</sup>

## Study design<sup>1-3</sup>

- PREVENT was a randomized, double-blind, placebo-controlled, time-to-event trial in 143 adults with anti-AQP4 antibody-positive NMOSD in 70 sites across 18 countries



## Duration<sup>2,4</sup>



\*All patients must have been vaccinated against *Neisseria meningitidis* if not already vaccinated. Patients must have been vaccinated at least 14 days prior to receiving the first dose of study drug or been vaccinated and received treatment with appropriate antibiotics until 14 days after vaccination.<sup>1-3</sup>

<sup>†</sup>The trial was designed to end after the 24th patient had a relapse event confirmed by a blinded, independent adjudication committee.<sup>2</sup>

## SELECT IMPORTANT SAFETY INFORMATION

### Contraindications

- Patients with unresolved serious *Neisseria meningitidis* infection
- Patients who are not currently vaccinated against *Neisseria meningitidis*, unless the risks of delaying Soliris treatment outweigh the risks of developing a meningococcal infection

# PREVENT patient criteria and study endpoints

## Study endpoints<sup>1,2</sup>

### Primary endpoint

- Time to first adjudicated on-trial relapse

### Primary analysis

- Relative risk reduction
- Estimated number of patients relapse-free at 48 weeks
- Total number of adjudicated relapses by treatment group
- Kaplan-Meier curve for time to first adjudicated relapse by treatment group

### Prespecified subgroup analysis

- Time to first adjudicated on-trial relapse in patients who were not receiving IST at baseline (24% of patients)

### Secondary endpoints

- Annualized relapse rate (ARR)
- Neurologic function
- Disease-related disability

### Additional outcome measures

- NMOSD interventions
- Safety and tolerability

## Select eligibility criteria<sup>1,2</sup>

- Age  $\geq 18$  years with a confirmed diagnosis of NMO or NMOSD
- Positive serologic test for anti-AQP4 antibody
- History of  $\geq 2$  relapses in the last 12 months, or 3 in the last 24 months, with  $\geq 1$  in the 12 months prior to screening
- Expanded Disability Status Scale (EDSS) score  $\leq 7$
- If on IST, on a stable dose regimen<sup>†</sup>
- The use of concurrent corticosteroids was limited to  $\leq 20$  mg/day
- Patients were excluded if they had been treated with rituximab or mitoxantrone within 3 months or with IVIg within 3 weeks prior to screening

## Defining relapses<sup>2</sup>

### On-trial relapses were defined as new onset of neurologic symptoms or worsening of existing neurologic symptoms that:

- Presented as objective change (clinical sign) on the neurologic examination
- Persisted for more than 24 hours
- Were identified by the treating physician
- Were attributable to NMOSD rather than other causes
- Were preceded by at least 30 days of clinical stability

Changes in imaging with no related clinical findings were not considered an on-trial relapse.

All relapses were retrospectively adjudicated by a panel of 3 experts (2 neurologists and 1 neuro-ophthalmologist) who were blinded to the treatment assignment.

Abbreviation: IVIg, intravenous immunoglobulin G.

<sup>†</sup>Patients were not required to be on IST.<sup>1</sup>

## Patient demographics and baseline characteristics<sup>2,3</sup>

	Soliris (N=96)	Placebo (N=47)
<b>Female, n (%)</b>	<b>88 (92)</b>	<b>42 (89)</b>
<b>Age, years; mean ± SD</b>	<b>43.9 ± 13.32</b>	<b>45.0 ± 13.29</b>
<b>Race, n (%)</b>		
Asian	37 (38.5)	15 (31.9)
Black or African American	9 (9.4)	8 (17.0)
White	46 (47.9)	24 (51.1)
Other or unknown	4 (4.2)	0 (0)
<b>IST at baseline, n (%)</b>		
None	21 (22)	13 (28)
Glucocorticoids alone	16 (17)	11 (23)
Azathioprine with or without glucocorticoids	37 (39)	13 (28)
Mycophenolate mofetil with or without glucocorticoids	17 (18)	8 (17)
Other drug with or without glucocorticoids <sup>a</sup>	5 (5)	2 (4)
<b>Disease status at baseline</b>		
EDSS score, median (range) <sup>b</sup>	4 (1.0-7.0)	4 (1.0-6.5)
ARR during previous 24 months, mean ± SD	1.94 ± 0.90	2.07 ± 1.04

Abbreviation: SD, standard deviation.

<sup>a</sup>Other drugs include cyclosporine, cyclophosphamide, methotrexate, mizoribine, and tacrolimus.

<sup>b</sup>Scores on the EDSS range from 0 (normal neurological examination) to 10 (death).

### SELECT IMPORTANT SAFETY INFORMATION

#### Warnings and Precautions

#### Serious Meningococcal Infections

##### Risk and Prevention

The use of Soliris increases a patient's susceptibility to serious meningococcal infections (septicemia and/or meningitis).

Vaccinate or revaccinate for meningococcal disease according to the most current ACIP recommendations for patients with complement deficiencies. Immunize patients without a history of meningococcal vaccination at least 2 weeks prior to receiving the first dose of Soliris. If Soliris must be initiated immediately in an unvaccinated patient, administer meningococcal vaccine(s) as soon as possible and provide 2 weeks of antibacterial drug prophylaxis. Discontinue Soliris in patients who are undergoing treatment for serious meningococcal infections.

**Please see Important Safety Information throughout and accompanying full Prescribing Information, including Boxed WARNING regarding serious meningococcal infections.**

**SOLIRIS**<sup>®</sup>  
(eculizumab)  
Injection for Intravenous Use  
300 mg/30 mL vial

# Soliris® (eculizumab) significantly reduced the risk of relapse by 94% vs placebo

## Primary endpoint

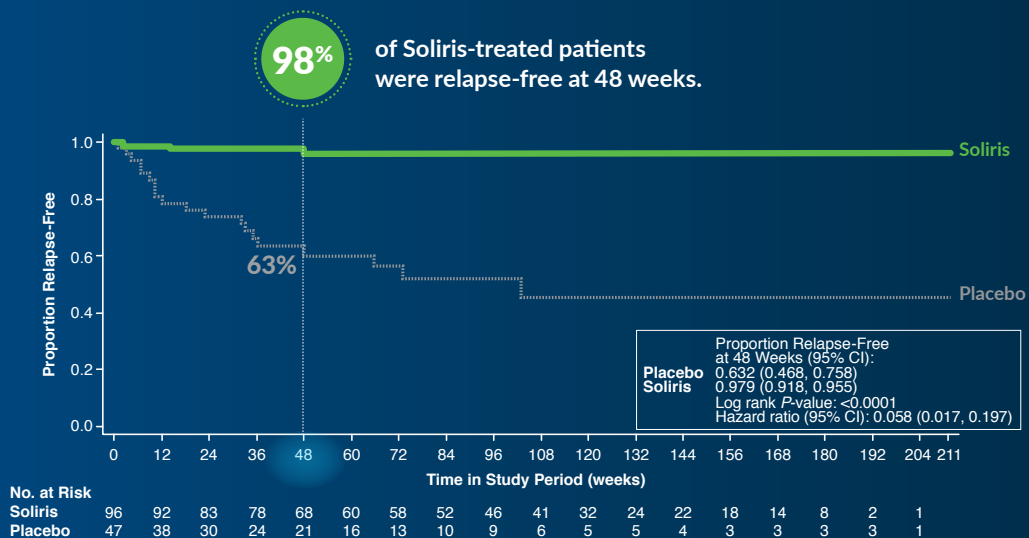
The PREVENT study demonstrated that Soliris is superior to placebo based on time to first adjudicated relapse ( $P < 0.0001$ )<sup>1</sup>

- The time to the first adjudicated on-trial relapse was significantly longer in Soliris-treated patients compared to patients on placebo (relative risk reduction 94%; HR=0.058; 95% CI: 0.017, 0.197;  $P < 0.0001$ )



reduction in risk of relapse in patients treated with Soliris compared to placebo ( $P < 0.0001$ ).<sup>1</sup>

## Percentage of Patients Who Were Relapse-Free (Full Analysis Set)<sup>1</sup>



Kaplan-Meier plot shows time to first adjudicated relapse among patients receiving Soliris or placebo for anti-AQP4 antibody-positive NMOSD in the analysis of the primary endpoint modified intention-to-treat population. Patients who did not experience an adjudicated on-trial relapse were censored at the end of the study period.<sup>12</sup>

Abbreviation: CI, confidence interval.

# Soliris significantly reduced the average number of relapses per patient per year vs placebo

## Secondary endpoint

Significant relative reduction in on-trial adjudicated ARR<sup>1,2</sup>

96%

reduction in adjudicated ARR with Soliris vs placebo (adjusted ARR, 0.02 vs 0.35, respectively; rate ratio [Soliris/placebo]=0.045;  $P<0.0001$ ).<sup>1,2\*</sup>

Adjusted adjudicated ARR was calculated as the total number of relapses observed during the study divided by the total number of patient-years in the study.

Abbreviation: ARR, annualized relapse rate.

\*Adjudicated ARR is based on Poisson regression adjusted for randomization strata and historical ARR in 24 months prior to screening.<sup>1,2</sup>

Compared to placebo, patients treated with Soliris had reductions in annualized rates of<sup>1</sup>

0.04  
for Soliris

VS

0.31  
for placebo

Hospitalizations

87%

relative reduction  
vs placebo

0.07  
for Soliris

VS

0.42  
for placebo

IV corticosteroid  
administrations to treat  
acute relapses

83%

relative reduction  
vs placebo

0.02  
for Soliris

VS

0.19  
for placebo

Plasma exchange  
treatments

89%

relative reduction  
vs placebo

Abbreviation: IV, intravenous.

## SELECT IMPORTANT SAFETY INFORMATION

### Warnings and Precautions

#### REMS

Prescribers must counsel patients about the risk of meningococcal infection, provide the patients with the REMS educational materials, and ensure patients are vaccinated with meningococcal vaccine(s).

#### Other Infections

Serious infections with *Neisseria species* (other than *N. meningitidis*), including disseminated gonococcal infections, have been reported.

Please see Important Safety Information throughout and accompanying full Prescribing Information, including Boxed WARNING regarding serious meningococcal infections.

**SOLIRIS**<sup>®</sup>  
(eculizumab)  
Injection for Intravenous Use  
300 mg/30 mL vial

## Safety from the 3+ year PREVENT study

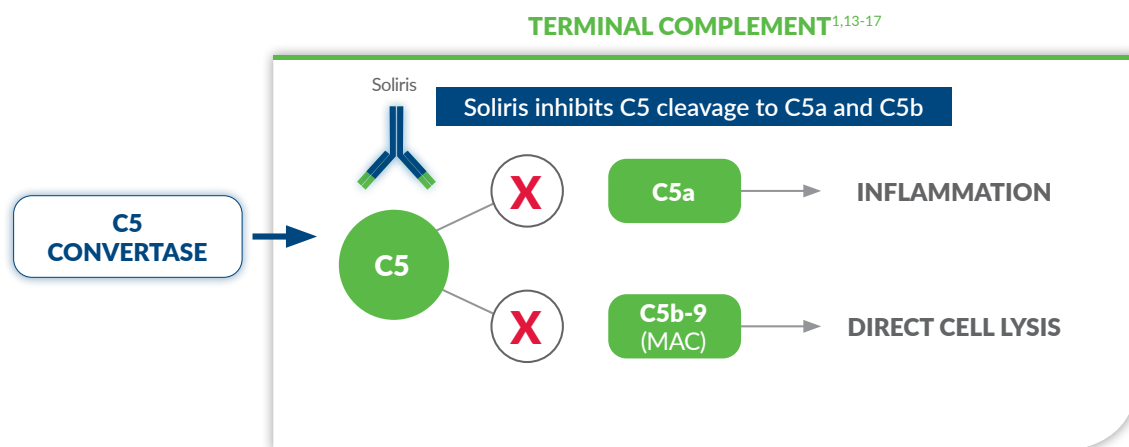
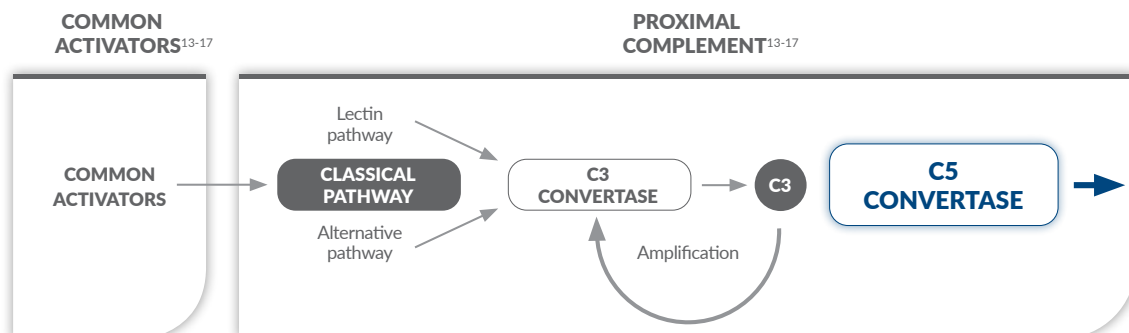
Adverse reactions reported in 5% or more of Soliris® (eculizumab)-treated patients in PREVENT and at a greater frequency than in placebo-treated patients<sup>1</sup>

	Soliris (N=96)	Placebo (N=47)
	N (%)	N (%)
<b>Events/patients</b>	1295/88	617/45
<b>Blood and lymphatic system disorders</b>		
Leukopenia	5 (5)	1 (2)
Lymphopenia	5 (5)	0 (0)
<b>Eye disorders</b>		
Cataract	6 (6)	2 (4)
<b>Gastrointestinal disorders</b>		
Diarrhea	15 (16)	7 (15)
Constipation	9 (9)	3 (6)
<b>General disorders and administration site conditions</b>		
Asthenia	5 (5)	1 (2)
<b>Infections and infestations</b>		
Upper respiratory tract infection	28 (29)	6 (13)
Nasopharyngitis	20 (21)	9 (19)
Influenza	11 (11)	2 (4)
Pharyngitis	10 (10)	3 (6)
Bronchitis	9 (9)	3 (6)
Conjunctivitis	9 (9)	4 (9)
Cystitis	8 (8)	1 (2)
Hordeolum	7 (7)	0 (0)
Sinusitis	6 (6)	0 (0)
Cellulitis	5 (5)	1 (2)
<b>Injury, poisoning, and procedural complications</b>		
Contusion	10 (10)	2 (4)
<b>Metabolism and nutrition disorders</b>		
Decreased appetite	5 (5)	1 (2)
<b>Musculoskeletal and connective tissue disorders</b>		
Back pain	14 (15)	6 (13)
Arthralgia	11 (11)	5 (11)
Musculoskeletal pain	6 (6)	0 (0)
Muscle spasms	5 (5)	2 (4)
<b>Nervous system disorders</b>		
Dizziness	14 (15)	6 (13)
Paraesthesia	8 (8)	3 (6)
<b>Respiratory, thoracic, and mediastinal disorders</b>		
Oropharyngeal pain	7 (7)	2 (4)
<b>Skin and subcutaneous tissue disorders</b>		
Alopecia	5 (5)	2 (4)

You must enroll and complete certification in the Soliris Risk Evaluation and Mitigation Strategy (REMS) program before you can prescribe Soliris. Visit [www.solirisrems.com](http://www.solirisrems.com) to complete the program or call 1-888-SOLIRIS (1-888-765-4747).



## Only Soliris targets C5 to inhibit terminal complement activity



The precise mechanism by which Soliris exerts its therapeutic effect in NMOSD is unknown, but is presumed to involve inhibition of aquaporin-4-antibody-induced terminal complement C5b-9 deposition.<sup>1</sup>

Abbreviation: MAC, membrane attack complex.

## SELECT IMPORTANT SAFETY INFORMATION

### Warnings and Precautions

#### Other Infections (continued)

Patients may have increased susceptibility to infections, especially with encapsulated bacteria. Additionally, *Aspergillus* infections have occurred in immunocompromised and neutropenic patients. Use caution when administering Soliris to patients with any systemic infection.

#### Infusion Reactions

Administration of Soliris may result in infusion reactions, including anaphylaxis or other hypersensitivity reactions. Interrupt Soliris infusion and institute appropriate supportive measures if signs of cardiovascular instability or respiratory compromise occur.

Please see Important Safety Information throughout and accompanying full Prescribing Information, including Boxed WARNING regarding serious meningococcal infections.

**SOLIRIS**<sup>®</sup>  
(eculizumab)  
Injection for Intravenous Use  
300 mg/30 mL vial

## Vaccinations are necessary before treatment with Soliris® (eculizumab)<sup>1</sup>

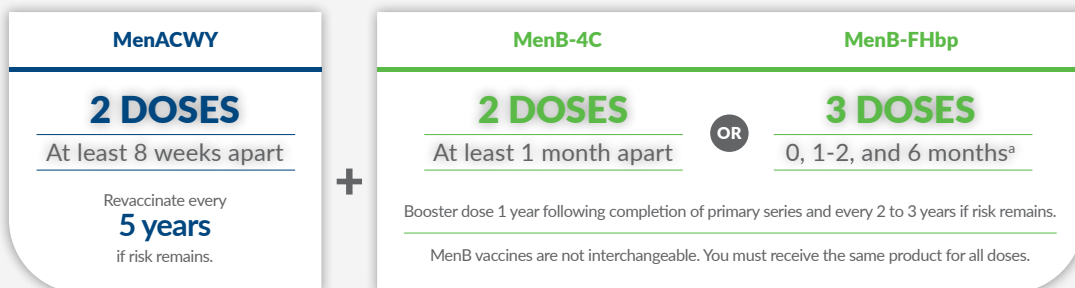
- The use of Soliris increases a patient's susceptibility to life-threatening and fatal meningococcal infections (septicemia and/or meningitis), which have occurred in patients treated with Soliris
- Comply with the most current Advisory Committee on Immunization Practices (ACIP) recommendations for meningococcal vaccination in patients with complement deficiencies
- Immunize patients with meningococcal vaccines at least 2 weeks prior to administering the first dose of Soliris, unless the risks of delaying therapy outweigh the risk of developing a meningococcal infection

The 2020 ACIP recommends the following meningococcal vaccination regimen for adult patients (ages ≥19 years) with persistent complement component deficiencies or in patients receiving complement inhibitors, including patients receiving Soliris<sup>18</sup>

# 2

### 2 VACCINATION TYPES

AT LEAST 2 WEEKS  
BEFORE FIRST DOSE



<sup>a</sup>For MenB-FHbp, if dose 2 was administered at least 6 months after dose 1, dose 3 is not needed.

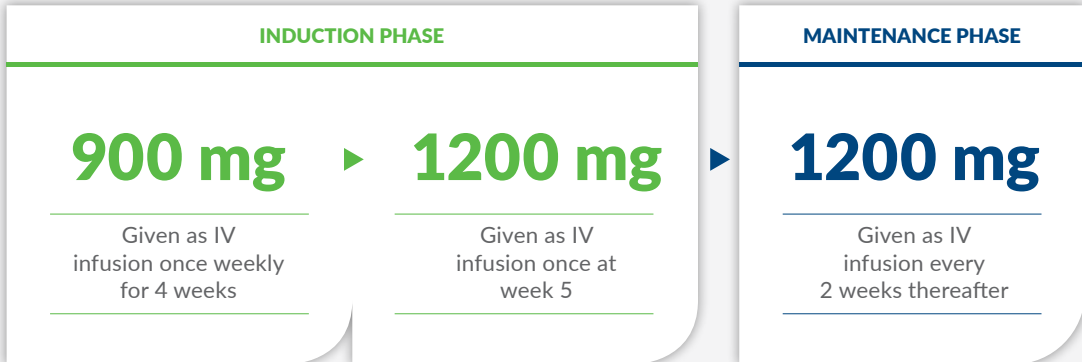
- If urgent Soliris therapy is indicated in an unvaccinated patient, initiate the vaccine regimen as soon as possible and provide 2 weeks of antibacterial drug prophylaxis<sup>1</sup>
- Vaccination reduces, but does not eliminate, the risk of meningococcal infections<sup>1</sup>
  - Closely monitor patients for early signs and symptoms of meningococcal infection, and evaluate patients immediately if an infection is suspected

Please refer to the latest ACIP recommendations for current and complete information for meningococcal vaccination in persons who are taking Soliris or have persistent complement component deficiencies.

# Soliris dosing and administration

Dosing consists of an induction phase followed by a maintenance phase<sup>1</sup>

Dosing regimen for adult patients with anti-AQP4 antibody-positive NMOSD<sup>1</sup>



- Administer Soliris over 35 minutes at the recommended dosage regimen time points, or within 2 days of these time points
- If an adverse reaction occurs during the administration of Soliris, the infusion may be slowed or stopped at the discretion of the physician
  - If the infusion is slowed, the total infusion time should not exceed 2 hours
  - Monitor the patient for at least 1 hour following completion of the infusion for signs or symptoms of an infusion reaction
- For adult patients with NMOSD, supplemental dosing of Soliris is required in the setting of concomitant plasmapheresis or plasma exchange, or fresh frozen plasma infusion

## SELECT IMPORTANT SAFETY INFORMATION

### Warnings and Precautions

#### Adverse Reactions

The most frequently reported adverse reactions in the NMOSD placebo-controlled trial (≥10%) are: upper respiratory infection, nasopharyngitis, diarrhea, back pain, dizziness, influenza, arthralgia, pharyngitis, and contusion.

Please see Important Safety Information throughout and accompanying full Prescribing Information, including Boxed WARNING regarding serious meningococcal infections.

**SOLIRIS**<sup>®</sup>  
(eculizumab)  
Injection for Intravenous Use  
300 mg/30 mL vial

# Alexion is committed to supporting patients with anti-AQP4 antibody-positive NMOSD

OneSource™ is a complimentary, personalized patient support program that offers:



## Health insurance navigation

Help your patients understand their health insurance coverage for Soliris® (eculizumab).  
Explore alternative funding options and financial resources.



## Disease information

Provide your patients with educational resources and supporting materials related to the disease.



## Ongoing support

Ensure each patient can continue their plan of care while on vacation, traveling for business, moving, heading to college, or changing insurance.



## Community connections

Connect patients with other people living with anti-AQP4 antibody-positive NMOSD by informing them of in-person and online events, patient meetings, and advocacy groups.

**We're always here to help.**  
**Call 1-888-SOLIRIS (1-888-765-4747) for more information.**

**References:** **1.** Soliris [package insert]. Boston, MA: Alexion Pharmaceuticals, Inc; 2019. **2.** Pittock SJ, Berthele A, Fujihara K, et al. Eculizumab in aquaporin-4-positive neuromyelitis optica spectrum disorder. *N Engl J Med.* 2019;381(7):614-625. **3.** Pittock SJ, Berthele A, Fujihara K, et al. Eculizumab in aquaporin-4-positive neuromyelitis optica spectrum disorder. *N Engl J Med.* 2019;381(7)(suppl 1-36):614-625. **4.** ClinicalTrials.gov. US National Library of Medicine. Accessed March 13, 2020. **5.** Jarius S, Wildemann B. The history of neuromyelitis optica. *J Neuroinflammation.* 2013;10:8. **6.** Wingerchuk DM, Hogancamp WF, O'Brien PC, Weinshenker BG. The clinical course of neuromyelitis optica (Devic's syndrome). *Neurology.* 1999;53(5):1107-1114. **7.** Lennon VA, Wingerchuk DM, Kryzer TJ, et al. A serum autoantibody marker of neuromyelitis optica: distinction from multiple sclerosis. *Lancet.* 2004;364(9451):2106-2112. **8.** Wingerchuk DM, Lennon VA, Lucchinetti CF, Pittock SJ, Weinshenker BG. The spectrum of neuromyelitis optica. *Lancet Neurol.* 2007;6(9):805-815. **9.** Wingerchuk DM, Lennon VA, Pittock SJ, Lucchinetti CF, Weinshenker BG. Revised diagnostic criteria for neuromyelitis optica. *Neurology.* 2006;66(10):1485-1489. **10.** Pittock SJ, Lennon VA, McKeon A, et al. Eculizumab in AQP4-IgG-positive relapsing neuromyelitis optica spectrum disorders: an open-label pilot study. *Lancet Neurol.* 2013;12(6):554-562. **11.** Wingerchuk DM, Banwell B, Bennett JL, et al. International consensus diagnostic criteria for neuromyelitis optica spectrum disorders. *Neurology.* 2015;85(2):177-189. **12.** Data on file, Alexion Pharmaceuticals. **13.** Dunkelberger JR, Song WC. Complement and its role in innate and adaptive immune responses. *Cell Res.* 2010;20(1):34-50. **14.** Morgan BP. Complement. In: Male D, Brostoff J, Roth D, Roitt I, eds. *Immunology.* 7th ed. Philadelphia, PA: Elsevier Ltd; 2006:87-104. **15.** Hill A, Kelly RJ, Hillmen P. Thrombosis in paroxysmal nocturnal hemoglobinuria. *Blood.* 2013;121(25):4985-4996. **16.** Emlen W, Li W, Kirschfink M. Therapeutic complement inhibition: new developments. *Semin Thromb Hemost.* 2010;36(6):660-668. **17.** Noris M, Mescia F, Remuzzi G. STEC-HUS, atypical HUS and TPP are all diseases of complement activation. *Nat Rev Nephrol.* 2012;8(11):622-633. **18.** Freedman M, Kroger A, Hunter P, Ault KA; for the Advisory Committee on Immunization Practices. Recommended Adult Immunization Schedule, United States, 2020. *Ann Int Med.* 2020;172(5):337-347. **19.** Jarius S, Ruprecht K, Wildemann B, et al. Contrasting disease patterns in seropositive and seronegative neuromyelitis optica: a multicentre study of 175 patients. *J Neuroinflammation.* 2012;9:14. **20.** Kitley J, Leite MI, Nakashima I, et al. Prognostic factors and disease course in aquaporin-4 antibody-positive patients with neuromyelitis optica spectrum disorder from the United Kingdom and Japan. *Brain.* 2012;135(Pt 6):1834-1849. **21.** Mealy MA, Wingerchuk DM, Greenberg BM, Levy M. Epidemiology of neuromyelitis optica in the United States: a multicenter analysis. *Arch Neurol.* 2012;69(9):1176-1180.

**Please see Important Safety Information throughout and accompanying full Prescribing Information, including Boxed WARNING regarding serious meningococcal infections.**

**SOLIRIS**<sup>®</sup>  
(eculizumab)  
Injection for Intravenous Use  
300 mg/30 mL vial

Soliris® (eculizumab) is the **FIRST AND ONLY** FDA-approved complement inhibitor indicated for the treatment of adults with anti-aquaporin-4 (AQP4) antibody-positive neuromyelitis optica spectrum disorder (NMOSD).<sup>1</sup>

WITH SOLIRIS, MORE  
**RELAPSE-FREE**  
TOMORROWS  
ARE POSSIBLE

Learn more about how to start your patients on Soliris at [solirisnmosd-hcp.com](https://solirisnmosd-hcp.com)

This is a hypothetical patient.

**NMOSD relapses are unpredictable and tend to be severe and recurrent**<sup>6,19,20</sup>

Over time, relapses have been shown to be inevitable for the majority of patients with NMOSD.<sup>6,19,21</sup>

**Soliris targets C5 to inhibit terminal complement activity**<sup>1</sup>

Soliris binds with high affinity to C5, inhibiting its cleavage to C5a and C5b. The precise mechanism by which Soliris exerts its therapeutic effect in NMOSD is unknown, but it is presumed to involve inhibition of aquaporin-4-antibody-induced terminal complement C5b-9 deposition.

**Superior efficacy vs placebo**<sup>1,2</sup>

Soliris demonstrated a significant **94%** relative risk reduction in time to first relapse vs placebo (HR=0.058; P<0.0001).

**98%** of Soliris patients were relapse-free at 48 weeks vs 63% with placebo.

PREVENT (Prevention of Relapses in Neuromyelitis Optica): Phase 3, randomized, double-blind, placebo-controlled study evaluating the efficacy and safety of Soliris in patients with anti-AQP4 antibody-positive NMOSD who received Soliris (N=96) or placebo (N=47).<sup>1,2</sup>

**SELECT IMPORTANT SAFETY INFORMATION**

**WARNING: SERIOUS MENINGOCOCCAL INFECTIONS**

Life-threatening and fatal meningococcal infections have occurred in patients treated with Soliris and may become rapidly life-threatening or fatal if not recognized and treated early.

- Comply with the most current Advisory Committee on Immunization Practices (ACIP) recommendations for meningococcal vaccination in patients with complement deficiencies.
- Immunize patients with meningococcal vaccines at least 2 weeks prior to administering the first dose of Soliris, unless the risks of delaying Soliris therapy outweigh the risk of developing a meningococcal infection. (See *Serious Meningococcal Infections* for additional guidance on the management of the risk of meningococcal infection).
- Vaccination reduces, but does not eliminate, the risk of meningococcal infections. Monitor patients for early signs of meningococcal infections and evaluate immediately if infection is suspected.

Soliris is available only through a restricted program under a Risk Evaluation and Mitigation Strategy (REMS). Under the Soliris REMS, prescribers must enroll in the program. Enrollment in the Soliris REMS program and additional information are available by telephone: 1-888-SOLIRIS (1-888-765-4747) or at [www.solirisrems.com](https://www.solirisrems.com).

Please see Important Safety Information throughout and accompanying full Prescribing Information, including Boxed WARNING regarding serious meningococcal infections.



Soliris® and Alexion® are registered trademarks and OneSource™ is a trademark of Alexion Pharmaceuticals, Inc. © 2020, Alexion Pharmaceuticals, Inc.  
All rights reserved. US/SOL-N/0116 05/20



**HIGHLIGHTS OF PRESCRIBING INFORMATION**

These highlights do not include all the information needed to use SOLIRIS safely and effectively. See full prescribing information for SOLIRIS.

SOLIRIS® (eculizumab) injection, for intravenous use  
Initial U.S. Approval: 2007

**WARNING: SERIOUS MENINGOCOCCAL INFECTIONS**

See full prescribing information for complete boxed warning

Life-threatening and fatal meningococcal infections have occurred in patients treated with Soliris and may become rapidly life-threatening or fatal if not recognized and treated early (5.1).

- Comply with the most current Advisory Committee on Immunization Practices (ACIP) recommendations for meningococcal vaccination in patients with complement deficiencies (5.1).
- Immunize patients with meningococcal vaccines at least 2 weeks prior to administering the first dose of Soliris, unless the risks of delaying Soliris therapy outweigh the risks of developing a meningococcal infection. (See *Warnings and Precautions* (5.1) for additional guidance on the management of the risk of meningococcal infection.)
- Vaccination reduces, but does not eliminate, the risk of meningococcal infections. Monitor patients for early signs of meningococcal infections, and evaluate immediately if infection is suspected.

Soliris is available only through a restricted program under a Risk Evaluation and Mitigation Strategy (REMS). Under the Soliris REMS, prescribers must enroll in the program (5.1).

**RECENT MAJOR CHANGES**

Indications and Usage (1.4)	06/2019
Dosage and Administration (2.4, 2.5)	06/2019
Dosage and Administration (2.5, 2.6, 2.7)	07/2018
Warnings and Precautions (5.1, 5.2)	07/2018

**INDICATIONS AND USAGE**

Soliris is a complement inhibitor indicated for:

- The treatment of patients with paroxysmal nocturnal hemoglobinuria (PNH) to reduce hemolysis (1.1).
- The treatment of patients with atypical hemolytic uremic syndrome (aHUS) to inhibit complement-mediated thrombotic microangiopathy (1.2).

Limitation of Use

Soliris is not indicated for the treatment of patients with Shiga toxin E. coli related hemolytic uremic syndrome (STEC-HUS).

- The treatment of generalized myasthenia gravis (gMG) in adult patients who are anti-acetylcholine receptor (AChR) antibody positive (1.3).
- The treatment of neuromyelitis optica spectrum disorder (NMOSD) in adult patients who are anti-aquaporin-4 (AQP4) antibody positive (1.4).

**DOSAGE AND ADMINISTRATION**

For intravenous infusion only

PNH Dosage Regimen: (2.2)

aHUS Dosage Regimen: (2.3)

gMG and NMOSD Dosage Regimen: (2.4)

**DOSAGE FORMS AND STRENGTHS**

Injection: 300 mg/30 mL (10 mg/mL) in a single-dose vial (3).

**CONTRAINDICATIONS**

Soliris is contraindicated in:

- Patients with unresolved serious *Neisseria meningitidis* infection (4).
- Patients who are not currently vaccinated against *Neisseria meningitidis*, unless the risks of delaying Soliris treatment outweigh the risks of developing a meningococcal infection (5.1).

**WARNINGS AND PRECAUTIONS**

- Discontinue Soliris in patients who are being treated for serious meningococcal infections (5.1).
- Use caution when administering Soliris to patients with any other systemic infection (5.2).

**ADVERSE REACTIONS**

The most frequently reported adverse reactions in the PNH randomized trial (≥10% overall and greater than placebo) are: headache, nasopharyngitis, back pain, and nausea (6.1).

The most frequently reported adverse reactions in aHUS single arm prospective trials (≥20%) are: headache, diarrhea, hypertension, upper respiratory infection, abdominal pain, vomiting, nasopharyngitis, anemia, cough, peripheral edema, nausea, urinary tract infections, pyrexia (6.1).

The most frequently reported adverse reaction in the gMG placebo-controlled clinical trial (≥10%) is: musculoskeletal pain (6.1).

The most frequently reported adverse reactions in the NMOSD placebo-controlled trial (≥10%) are: upper respiratory infection, nasopharyngitis, diarrhea, back pain, dizziness, influenza, arthralgia, pharyngitis, and contusion (6.1)

To report SUSPECTED ADVERSE REACTIONS, contact Alexion Pharmaceuticals, Inc. at 1-844-259-6783 or FDA at 1-800-FDA-1088 or [www.fda.gov/medwatch](http://www.fda.gov/medwatch).

See 17 PATIENT COUNSELING INFORMATION and Medication Guide.

Revised: 06/2019

**FULL PRESCRIBING INFORMATION: CONTENTS\*****WARNING: SERIOUS MENINGOCOCCAL INFECTIONS****1 INDICATIONS AND USAGE**

- 1.1 Paroxysmal Nocturnal Hemoglobinuria (PNH)
- 1.2 Atypical Hemolytic Uremic Syndrome (aHUS)
- 1.3 Generalized Myasthenia Gravis (gMG)
- 1.4 Neuromyelitis Optica Spectrum Disorder (NMOSD)

**2 DOSAGE AND ADMINISTRATION**

- 2.1 Recommended Vaccination and Prophylaxis
- 2.2 Recommended Dosage Regimen – PNH
- 2.3 Recommended Dosage Regimen – aHUS
- 2.4 Recommended Dosage Regimen – gMG and NMOSD
- 2.5 Dose Adjustment in Case of Plasmapheresis, Plasma Exchange, or Fresh Frozen Plasma Infusion
- 2.6 Preparation
- 2.7 Administration

3

**DOSAGE FORMS AND STRENGTHS**

4

**CONTRAINDICATIONS**

5

**WARNINGS AND PRECAUTIONS**

- 5.1 Serious Meningococcal Infections
- 5.2 Other Infections
- 5.3 Monitoring Disease Manifestations after Soliris Discontinuation
- 5.4 Thrombosis Prevention and Management
- 5.5 Infusion Reactions

6

**ADVERSE REACTIONS**

- 6.1 Clinical Trial Experience
- 6.2 Immunogenicity
- 6.3 Postmarketing Experience

8

**USE IN SPECIFIC POPULATIONS**

- 8.1 Pregnancy
- 8.2 Lactation
- 8.4 Pediatric Use
- 8.5 Geriatric Use

**11 DESCRIPTION****12 CLINICAL PHARMACOLOGY**

- 12.1 Mechanism of Action
- 12.2 Pharmacodynamics
- 12.3 Pharmacokinetics

**13 NONCLINICAL TOXICOLOGY**

- 13.1 Carcinogenesis, Mutagenesis, Impairment of Fertility

**14 CLINICAL STUDIES**

- 14.1 Paroxysmal Nocturnal Hemoglobinuria (PNH)
- 14.2 Atypical Hemolytic Uremic Syndrome (aHUS)
- 14.3 Generalized Myasthenia Gravis (gMG)
- 14.4 Neuromyelitis Optica Spectrum Disorder (NMOSD)

**16 HOW SUPPLIED/STORAGE AND HANDLING****17 PATIENT COUNSELING INFORMATION**

\*Sections or subsections omitted from the full prescribing information are not listed.

**FULL PRESCRIBING INFORMATION****WARNING: SERIOUS MENINGOCOCCAL INFECTIONS**

Life-threatening and fatal meningococcal infections have occurred in patients treated with Soliris. Meningococcal infection may become rapidly life-threatening or fatal if not recognized and treated early [see *Warnings and Precautions* (5.1)].

- Comply with the most current Advisory Committee on Immunization Practices (ACIP) recommendations for meningococcal vaccination in patients with complement deficiencies.
- Immunize patients with meningococcal vaccines at least 2 weeks prior to administering the first dose of Soliris, unless the risks of delaying Soliris therapy outweigh the risk of developing a meningococcal infection. [See *Warnings and Precautions* (5.1) for additional guidance on the management of the risk of meningococcal infection].
- Vaccination reduces, but does not eliminate, the risk of meningococcal infections. Monitor patients for early signs of meningococcal infections and evaluate immediately if infection is suspected.

Soliris is available only through a restricted program under a Risk Evaluation and Mitigation Strategy (REMS). Under the Soliris REMS, prescribers must enroll in the program [see *Warnings and Precautions* (5.1)]. Enrollment in the Soliris REMS program and additional information are available by telephone: 1-888-SOLIRIS (1-888-765-4747) or at [www.solirisrems.com](http://www.solirisrems.com).

**1 INDICATIONS AND USAGE****1.1 Paroxysmal Nocturnal Hemoglobinuria (PNH)**

Soliris is indicated for the treatment of patients with paroxysmal nocturnal hemoglobinuria (PNH) to reduce hemolysis.

**1.2 Atypical Hemolytic Uremic Syndrome (aHUS)**

Soliris is indicated for the treatment of patients with atypical hemolytic uremic syndrome (aHUS) to inhibit complement-mediated thrombotic microangiopathy.

Limitation of Use

Soliris is not indicated for the treatment of patients with Shiga toxin E. coli related hemolytic uremic syndrome (STEC-HUS).

**1.3 Generalized Myasthenia Gravis (gMG)**

Soliris is indicated for the treatment of generalized myasthenia gravis (gMG) in adult patients who are anti-acetylcholine receptor (AChR) antibody positive.

**1.4 Neuromyelitis Optica Spectrum Disorder (NMOSD)**

Soliris is indicated for the treatment of neuromyelitis optica spectrum disorder (NMOSD) in adult patients who are anti-aquaporin-4 (AQP4) antibody positive.

**2 DOSAGE AND ADMINISTRATION****2.1 Recommended Vaccination and Prophylaxis**

Vaccinate patients according to current ACIP guidelines to reduce the risk of serious infection [see *Warnings and Precautions* (5.1 and 5.2)].

Provide two weeks of antibacterial drug prophylaxis to patients if Soliris must be initiated immediately and vaccines are administered less than two weeks before starting Soliris therapy.

Healthcare professionals who prescribe Soliris must enroll in the Soliris REMS [see *Warnings and Precautions* (5.1)].

**2.2 Recommended Dosage Regimen – PNH**

For patients 18 years of age and older, Soliris therapy consists of:

- 600 mg weekly for the first 4 weeks, followed by
- 900 mg for the fifth dose 1 week later, then

- 900 mg every 2 weeks thereafter.

Administer Soliris at the recommended dosage regimen time points, or within two days of these time points [see *Warnings and Precautions* (5.4)].

### 2.3 Recommended Dosage Regimen – aHUS

For patients 18 years of age and older, Soliris therapy consists of:

- 900 mg weekly for the first 4 weeks, followed by
- 1200 mg for the fifth dose 1 week later, then
- 1200 mg every 2 weeks thereafter.

For patients less than 18 years of age, administer Soliris based upon body weight, according to the following schedule (Table 1):

**Table 1: Dosing Recommendations in aHUS Patients Less Than 18 Years of Age**

Patient Body Weight	Induction	Maintenance
40 kg and over	900 mg weekly x 4 doses	1200 mg at week 5; then 1200 mg every 2 weeks
30 kg to less than 40 kg	600 mg weekly x 2 doses	900 mg at week 3; then 900 mg every 2 weeks
20 kg to less than 30 kg	600 mg weekly x 2 doses	600 mg at week 3; then 600 mg every 2 weeks
10 kg to less than 20 kg	600 mg weekly x 1 dose	300 mg at week 2; then 300 mg every 2 weeks
5 kg to less than 10 kg	300 mg weekly x 1 dose	300 mg at week 2; then 300 mg every 3 weeks

Administer Soliris at the recommended dosage regimen time points, or within two days of these time points.

### 2.4 Recommended Dosage Regimen – gMG and NMOSD

For adult patients with generalized myasthenia gravis or neuromyelitis optica spectrum disorder, Soliris therapy consists of:

- 900 mg weekly for the first 4 weeks, followed by
- 1200 mg for the fifth dose 1 week later, then
- 1200 mg every 2 weeks thereafter.

Administer Soliris at the recommended dosage regimen time points, or within two days of these time points.

### 2.5 Dose Adjustment in Case of Plasmapheresis, Plasma Exchange, or Fresh Frozen Plasma Infusion

For adult and pediatric patients with aHUS, and adult patients with gMG or NMOSD, supplemental dosing of Soliris is required in the setting of concomitant plasmapheresis or plasma exchange, or fresh frozen plasma infusion (PE/PI) (Table 2).

**Table 2: Supplemental Dose of Soliris after PE/PI**

Type of Plasma Intervention	Most Recent Soliris Dose	Supplemental Soliris Dose With Each Plasma Intervention	Timing of Supplemental Soliris Dose
Plasmapheresis or plasma exchange	300 mg	300 mg per each plasmapheresis or plasma exchange session	Within 60 minutes after each plasmapheresis or plasma exchange
	≥600 mg	600 mg per each plasmapheresis or plasma exchange session	
Fresh frozen plasma infusion	≥300 mg	300 mg per infusion of fresh frozen plasma	60 minutes prior to each infusion of fresh frozen plasma

### 2.6 Preparation

Dilute Soliris to a final admixture concentration of 5 mg/mL using the following steps:

- Withdraw the required amount of Soliris from the vial into a sterile syringe.
- Transfer the recommended dose to an infusion bag.
- Dilute Soliris to a final concentration of 5 mg/mL by adding the appropriate amount (equal volume of diluent to drug volume) of 0.9% Sodium Chloride Injection, USP; 0.45% Sodium Chloride Injection, USP; 5% Dextrose in Water Injection, USP; or Ringer's Injection, USP to the infusion bag.

The final admixed Soliris 5 mg/mL infusion volume is 60 mL for 300 mg doses, 120 mL for 600 mg doses, 180 mL for 900 mg doses or 240 mL for 1200 mg doses (Table 3).

**Table 3: Preparation and Reconstitution of Soliris**

Soliris Dose	Diluent Volume	Final Volume
300 mg	30 mL	60 mL
600 mg	60 mL	120 mL
900 mg	90 mL	180 mL
1200 mg	120 mL	240 mL

Gently invert the infusion bag containing the diluted Soliris solution to ensure thorough mixing of the product and diluent. Discard any unused portion left in a vial, as the product contains no preservatives.

Prior to administration, the admixture should be allowed to adjust to room temperature [18°-25° C, 64°-77° F]. The admixture must not be heated in a microwave or with any heat source other than ambient air temperature.

Parenteral drug products should be inspected visually for particulate matter and discoloration prior to administration, whenever solution and container permit.

### 2.7 Administration

**Only administer as an intravenous infusion.**

*Do not administer as an intravenous push or bolus injection.*

Administer the Soliris admixture by intravenous infusion over 35 minutes in adults and 1 to 4 hours in pediatric patients via gravity feed, a syringe-type pump, or an infusion pump. Admixed solutions of Soliris are stable for 24 h at 2°-8° C (36°-46° F) and at room temperature.

If an adverse reaction occurs during the administration of Soliris, the infusion may be slowed or stopped at the discretion of the physician. If the infusion is slowed, the total infusion time should not exceed two hours in adults. Monitor the patient for at least one hour following completion of the infusion for signs or symptoms of an infusion reaction.

### 3 DOSAGE FORMS AND STRENGTHS

Injection: 300 mg/30 mL (10 mg/mL) as a clear, colorless solution in a single-dose vial.

### 4 CONTRAINDICATIONS

Soliris is contraindicated in:

- Patients with unresolved serious *Neisseria meningitidis* infection [see *Warnings and Precautions* (5.1)].
- Patients who are not currently vaccinated against *Neisseria meningitidis*, unless the risks of delaying Soliris treatment outweigh the risks of developing a meningococcal infection [see *Warnings and Precautions* (5.1)].

### 5 WARNINGS AND PRECAUTIONS

#### 5.1 Serious Meningococcal Infections

##### Risk and Prevention

Life-threatening and fatal meningococcal infections have occurred in patients treated with Soliris. The use of Soliris increases a patient's susceptibility to serious meningococcal infections (septicemia and/or meningitis). Soliris is associated with an approximate 2,000-fold increased risk of meningococcal disease in comparison to the general U.S. population annual rate (0.14 per 100,000 population in 2015).

Vaccinate for meningococcal disease according to the most current Advisory Committee on Immunization Practices (ACIP) recommendations for patients with complement deficiencies. Revaccinate patients in accordance with ACIP recommendations, considering the duration of Soliris therapy.

Immunize patients without a history of meningococcal vaccination at least 2 weeks prior to receiving the first dose of Soliris. If urgent Soliris therapy is indicated in an unvaccinated patient, administer meningococcal vaccine(s) as soon as possible and provide patients with two weeks of antibacterial drug prophylaxis.

In prospective clinical studies, 75/100 patients with aHUS were treated with Soliris less than 2 weeks after meningococcal vaccination and 64 of these 75 patients received antibiotics for prophylaxis of meningococcal infection until at least 2 weeks after meningococcal vaccination. The benefits and risks of antibiotic prophylaxis for prevention of meningococcal infections in patients receiving Soliris have not been established.

Vaccination reduces, but does not eliminate, the risk of meningococcal infections. In clinical studies, 2 out of 196 PNH patients developed serious meningococcal infections while receiving treatment with Soliris; both had been vaccinated [see *Adverse Reactions* (6.1)]. In clinical studies among non-PNH patients, meningococcal meningitis occurred in one unvaccinated patient. In addition, 3 out of 130 previously vaccinated patients with aHUS developed meningococcal infections while receiving treatment with Soliris [see *Adverse Reactions* (6.1)].

Closely monitor patients for early signs and symptoms of meningococcal infection and evaluate patients immediately if an infection is suspected. Meningococcal infection may become rapidly life-threatening or fatal if not recognized and treated early. Discontinue Soliris in patients who are undergoing treatment for serious meningococcal infections.

##### REMS

Because of the risk of meningococcal infections, Soliris is available only through a restricted program under a Risk Evaluation and Mitigation Strategy (REMS). Under the Soliris REMS, prescribers must enroll in the program.

Prescribers must counsel patients about the risk of meningococcal infection, provide the patients with the REMS educational materials, and ensure patients are vaccinated with meningococcal vaccine(s).

Enrollment in the Soliris REMS program and additional information are available by telephone: 1-888-SOLIRIS (1-888-765-4747) or at [www.solirisrems.com](http://www.solirisrems.com).

#### 5.2 Other Infections

Serious infections with *Neisseria* species (other than *N. meningitidis*), including disseminated gonococcal infections, have been reported.

Soliris blocks terminal complement activation; therefore patients may have increased susceptibility to infections, especially with encapsulated bacteria. Additionally, *Aspergillus* infections have occurred in immunocompromised and neutropenic patients. Children treated with Soliris may be at increased risk of developing serious infections due to *Streptococcus pneumoniae* and *Haemophilus influenzae* type b (Hib). Administer vaccinations for the prevention of *Streptococcus pneumoniae* and *Haemophilus influenzae* type b (Hib) infections according to ACIP guidelines. Use caution when administering Soliris to patients with any systemic infection [see *Warnings and Precautions* (5.1)].

#### 5.3 Monitoring Disease Manifestations after Soliris Discontinuation

##### Treatment Discontinuation for PNH

Monitor patients after discontinuing Soliris for at least 8 weeks to detect hemolysis.

##### Treatment Discontinuation for aHUS

After discontinuing Soliris, monitor patients with aHUS for signs and symptoms of thrombotic microangiopathy (TMA) complications for at least 12 weeks. In aHUS clinical trials, 18 patients (5 in the prospective studies) discontinued Soliris treatment. TMA complications occurred following a missed dose in 5 patients, and Soliris was reinitiated in 4 of these 5 patients.

Clinical signs and symptoms of TMA include changes in mental status, seizures, angina, dyspnea, or thrombosis. In addition, the following changes in laboratory parameters may identify a TMA complication: occurrence of two, or repeated measurement of any one of the following: a decrease in platelet count by 25% or more compared to baseline or the peak platelet count during Soliris treatment; an increase in serum creatinine by 25% or more compared to baseline or nadir during Soliris treatment; or an increase in serum LDH by 25% or more over baseline or nadir during Soliris treatment.

If TMA complications occur after Soliris discontinuation, consider reinstatement of Soliris treatment, plasma therapy [plasmapheresis, plasma exchange, or fresh frozen plasma infusion (PE/PI)], or appropriate organ-specific supportive measures.

#### 5.4 Thrombosis Prevention and Management

The effect of withdrawal of anticoagulant therapy during Soliris treatment has not been established. Therefore, treatment with Soliris should not alter anticoagulant management.

#### 5.5 Infusion Reactions

Administration of Soliris may result in infusion reactions, including anaphylaxis or other hypersensitivity reactions. In clinical trials, no patients experienced an infusion reaction which required discontinuation of Soliris. Interrupt Soliris infusion and institute appropriate supportive measures if signs of cardiovascular instability or respiratory compromise occur.



## 6 ADVERSE REACTIONS

The following serious adverse reactions are discussed in greater detail in other sections of the labeling:

- Serious Meningococcal Infections [see *Warnings and Precautions (5.1)*]
- Other Infections [see *Warnings and Precautions (5.2)*]
- Monitoring Disease Manifestations after Soliris Discontinuation [see *Warnings and Precautions (5.3)*]
- Thrombosis Prevention and Management [see *Warnings and Precautions (5.4)*]
- Infusion Reactions [see *Warnings and Precautions (5.5)*]

### 6.1 Clinical Trial Experience

Because clinical trials are conducted under widely varying conditions, adverse reaction rates observed in the clinical trials of a drug cannot be directly compared to rates in the clinical trials of another drug and may not reflect the rates observed in practice.

Meningococcal infections are the most important adverse reactions experienced by patients receiving Soliris. In PNH clinical studies, two patients experienced meningococcal sepsis. Both patients had previously received a meningococcal vaccine. In clinical studies among patients without PNH, meningococcal meningitis occurred in one unvaccinated patient. Meningococcal sepsis occurred in one previously vaccinated patient enrolled in the retrospective aHUS study during the post-study follow-up period [see *Warnings and Precautions (5.1)*].

#### PNH

The data described below reflect exposure to Soliris in 196 adult patients with PNH, age 18-85, of whom 55% were female. All had signs or symptoms of intravascular hemolysis. Soliris was studied in a placebo-controlled clinical study (PNH Study 1, in which 43 patients received Soliris and 44, placebo); a single arm clinical study (PNH Study 2); and a long term extension study (E05-001). 182 patients were exposed for greater than one year. All patients received the recommended Soliris dose regimen.

Table 4 summarizes the adverse reactions that occurred at a numerically higher rate in the Soliris group than the placebo group and at a rate of 5% or more among patients treated with Soliris.

**Table 4: Adverse Reactions Reported in 5% or More of Soliris Treated Patients with PNH and Greater than Placebo in the Controlled Clinical Study**

Reaction	Soliris	Placebo
	(N=43) N (%)	(N=44) N (%)
Headache	19 (44)	12 (27)
Nasopharyngitis	10 (23)	8 (18)
Back pain	8 (19)	4 (9)
Nausea	7 (16)	5 (11)
Fatigue	5 (12)	1 (2)
Cough	5 (12)	4 (9)
Herpes simplex infections	3 (7)	0
Sinusitis	3 (7)	0
Respiratory tract infection	3 (7)	1 (2)
Constipation	3 (7)	2 (5)
Myalgia	3 (7)	1 (2)
Pain in extremity	3 (7)	1 (2)
Influenza-like illness	2 (5)	1 (2)

In the placebo-controlled clinical study, serious adverse reactions occurred among 4 (9%) patients receiving Soliris and 9 (21%) patients receiving placebo. The serious reactions included infections and progression of PNH. No deaths occurred in the study and no patients receiving Soliris experienced a thrombotic event; one thrombotic event occurred in a patient receiving placebo.

Among 193 patients with PNH treated with Soliris in the single arm, clinical study or the follow-up study, the adverse reactions were similar to those reported in the placebo-controlled clinical study. Serious adverse reactions occurred among 16% of the patients in these studies. The most common serious adverse reactions were: viral infection (2%), headache (2%), anemia (2%), and pyrexia (2%).

#### aHUS

The safety of Soliris therapy in patients with aHUS was evaluated in four prospective, single-arm studies, three in adult and adolescent patients (Studies C08-002A/B, C08-003A/B, and C10-004), one in pediatric and adolescent patients (Study C10-003), and one retrospective study (Study C09-001r).

The data described below were derived from 78 adult and adolescent patients with aHUS in Studies C08-002A/B, C08-003A/B and C10-004. All patients received the recommended dosage of Soliris. Median exposure was 67 weeks (range: 2-145 weeks). Table 5 summarizes all adverse events reported in at least 10% of patients in Studies C08-002A/B, C08-003A/B and C10-004 combined.

**Table 5: Per Patient Incidence of Adverse Events in 10% or More Adult and Adolescent Patients Enrolled in Studies C08-002A/B, C08-003A/B and C10-004 Separately and in Total**

	Number (%) of Patients			
	C08-002A/B (N=17)	C08-003A/B (N=20)	C10-004 (N=41)	Total (N=78)
<b>Vascular Disorders</b>				
Hypertension <sup>a</sup>	10 (59)	9 (45)	7 (17)	26 (33)
Hypotension	2 (12)	4 (20)	7 (17)	13 (17)
<b>Infections and Infestations</b>				
Bronchitis	3 (18)	2 (10)	4 (10)	9 (12)
Nasopharyngitis	3 (18)	11 (55)	7 (17)	21 (27)
Gastroenteritis	3 (18)	4 (20)	2 (5)	9 (12)
Upper respiratory tract infection	5 (29)	8 (40)	2 (5)	15 (19)
Urinary tract infection	6 (35)	3 (15)	8 (20)	17 (22)
<b>Gastrointestinal Disorders</b>				
Diarrhea	8 (47)	8 (40)	12 (32)	29 (37)
Vomiting	8 (47)	9 (45)	6 (15)	23 (30)
Nausea	5 (29)	8 (40)	5 (12)	18 (23)
Abdominal pain	3 (18)	6 (30)	6 (15)	15 (19)

	Number (%) of Patients			
	C08-002A/B (N=17)	C08-003A/B (N=20)	C10-004 (N=41)	Total (N=78)
<b>Nervous System Disorders</b>				
Headache	7 (41)	10 (50)	15 (37)	32 (41)
<b>Blood and Lymphatic System Disorders</b>				
Anemia	6 (35)	7 (35)	7 (17)	20 (26)
Leukopenia	4 (24)	3 (15)	5 (12)	12 (15)
<b>Psychiatric Disorders</b>				
Insomnia	4 (24)	2 (10)	5 (12)	11 (14)
<b>Renal and Urinary Disorders</b>				
Renal Impairment	5 (29)	3 (15)	6 (15)	14 (18)
Proteinuria	2 (12)	1 (5)	5 (12)	8 (10)
<b>Respiratory, Thoracic and Mediastinal Disorders</b>				
Cough	4 (24)	6 (30)	8 (20)	18 (23)
<b>General Disorders and Administration Site Conditions</b>				
Fatigue	3 (18)	4 (20)	3 (7)	10 (13)
Peripheral edema	5 (29)	4 (20)	9 (22)	18 (23)
Pyrexia	4 (24)	5 (25)	7 (17)	16 (21)
Asthenia	3 (18)	4 (20)	6 (15)	13 (17)
<b>Eye Disorder</b>				
5 (29)	2 (10)	8 (20)	15 (19)	
<b>Metabolism and Nutrition Disorders</b>				
Hypokalemia	3 (18)	2 (10)	4 (10)	9 (12)
<b>Neoplasms benign, malignant, and unspecified (including cysts and polyps)</b>				
1 (6)	6 (30)	1 (20)	8 (10)	
<b>Skin and Subcutaneous Tissue Disorders</b>				
Rash	2 (12)	3 (15)	6 (15)	11 (14)
Pruritus	1 (6)	3 (15)	4 (10)	8 (10)
<b>Musculoskeletal and Connective Tissue Disorders</b>				
Arthralgia	1 (6)	2 (10)	7 (17)	10 (13)
Back pain	3 (18)	3 (15)	2 (5)	8 (10)

<sup>a</sup> includes the preferred terms hypertension, accelerated hypertension, and malignant hypertension.

In Studies C08-002A/B, C08-003A/B and C10-004 combined, 60% (47/78) of patients experienced a serious adverse event (SAE). The most commonly reported SAEs were infections (24%), hypertension (5%), chronic renal failure (5%), and renal impairment (5%). Five patients discontinued Soliris due to adverse events; three due to worsening renal function, one due to new diagnosis of Systemic Lupus Erythematosus, and one due to meningococcal meningitis.

Study C10-003 included 22 pediatric and adolescent patients, of which 18 patients were less than 12 years of age. All patients received the recommended dosage of Soliris. Median exposure was 44 weeks (range: 1 dose-87 weeks).

Table 6 summarizes all adverse events reported in at least 10% of patients enrolled in Study C10-003.

**Table 6: Per Patient Incidence of Adverse Reactions in 10% or More Patients Enrolled in Study C10-003**

	1 month to <12 yrs	Total
	(N=18)	(N=22)
<b>Eye Disorders</b>	3 (17)	3 (14)
<b>Gastrointestinal Disorders</b>		
Abdominal pain	6 (33)	7 (32)
Diarrhea	5 (28)	7 (32)
Vomiting	4 (22)	6 (27)
Dyspepsia	0	3 (14)
<b>General Disorders and Administration Site Conditions</b>		
Pyrexia	9 (50)	11 (50)
<b>Infections and Infestations</b>		
Upper respiratory tract infection	5 (28)	7 (32)
Nasopharyngitis	3 (17)	6 (27)
Rhinitis	4 (22)	4 (18)
Urinary Tract infection	3 (17)	4 (18)
Catheter site infection	3 (17)	3 (14)
<b>Musculoskeletal and Connective Tissue Disorders</b>		
Muscle spasms	2 (11)	3 (14)
<b>Nervous System Disorders</b>		
Headache	3 (17)	4 (18)
<b>Renal and Urinary Disorders</b>		
3 (17)	4 (18)	
<b>Respiratory, Thoracic and Mediastinal Disorders</b>		
Cough	7 (39)	8 (36)
Oropharyngeal pain	1 (6)	3 (14)
<b>Skin and Subcutaneous Tissue Disorders</b>		
Rash	4 (22)	4 (18)
<b>Vascular Disorders</b>		
Hypertension	4 (22)	4 (18)

In Study C10-003, 59% (13/22) of patients experienced a serious adverse event (SAE). The most commonly reported SAEs were hypertension (9%), viral gastroenteritis (9%), pyrexia (9%), and upper respiratory infection (9%). One patient discontinued Soliris due to an adverse event (severe agitation).

Analysis of retrospectively collected adverse event data from pediatric and adult patients enrolled in Study C09-001r (N=30) revealed a safety profile that was similar to that which was observed in the two prospective studies. Study C09-001r included 19 pediatric patients less than 18 years of age. Overall, the safety of Soliris in pediatric patients with aHUS enrolled in Study C09-001r appeared similar to that observed in adult patients. The most common (≥15%) adverse events occurring in pediatric patients are presented in Table 7.

**Table 7: Adverse Reactions Occurring in at Least 15% of Patients Less than 18 Years of Age Enrolled in Study C09-001r**

	Number (%) of Patients			
	<2 yrs (N=5)	2 to <12 yrs (N=10)	12 to <18 yrs (N=4)	Total (N=19)
<b>General Disorders and Administration Site Conditions</b>				
Pyrexia	4 (80)	4 (40)	1 (25)	9 (47)
<b>Gastrointestinal Disorders</b>				
Diarrhea	1 (20)	4 (40)	1 (25)	6 (32)
Vomiting	2 (40)	1 (10)	1 (25)	4 (21)
<b>Infections and Infestations</b>				
Upper respiratory tract infection <sup>a</sup>	2 (40)	3 (30)	1 (25)	6 (32)
<b>Respiratory, Thoracic and Mediastinal Disorders</b>				
Cough	3 (60)	2 (20)	0 (0)	5 (26)
Nasal congestion	2 (40)	2 (20)	0 (0)	4 (21)
<b>Cardiac Disorders</b>				
Tachycardia	2 (40)	2 (20)	0 (0)	4 (21)

<sup>a</sup> includes the preferred terms upper respiratory tract infection and nasopharyngitis.

**Generalized Myasthenia Gravis (gMG)**

In a 26-week placebo-controlled trial evaluating the effect of Soliris for the treatment of gMG (gMG Study 1), 62 patients received Soliris at the recommended dosage regimen and 63 patients received placebo [see *Clinical Studies (14.3)*]. Patients were 19 to 79 years of age, and 66% were female. Table 8 displays the most common adverse reactions from gMG Study 1 that occurred in ≥5% of Soliris-treated patients and at a greater frequency than on placebo.

**Table 8: Adverse Reactions Reported in 5% or More of Soliris-Treated Patients in gMG Study 1 and at a Greater Frequency than in Placebo-Treated Patients**

	Soliris (N=62) N (%)	Placebo (N=63) N (%)
<b>Gastrointestinal Disorders</b>		
Abdominal pain	5 (8)	3 (5)
<b>General Disorders and Administration Site Conditions</b>		
Peripheral edema	5 (8)	3 (5)
Pyrexia	4 (7)	2 (3)
<b>Infections and Infestations</b>		
Herpes simplex virus infections	5 (8)	1 (2)
<b>Injury, Poisoning, and Procedural Complications</b>		
Contusion	5 (8)	2 (3)
<b>Musculoskeletal and Connective Tissue Disorders</b>		
Musculoskeletal pain	9 (15)	5 (8)

The most common adverse reactions (≥10%) that occurred in Soliris-treated patients in the long-term extension to gMG Study 1, Study ECU-MG-302, and that are not included in Table 8 were headache (26%), nasopharyngitis (24%), diarrhea (15%), arthralgia (12%), upper respiratory tract infection (11%), and nausea (10%).

**Neuromyelitis Optica Spectrum Disorder (NMOSD)**

In a placebo-controlled trial evaluating the effect of Soliris for the treatment of NMOSD (NMOSD Study 1), 96 patients received Soliris at the recommended dosage regimen and 47 patients received placebo [see *Clinical Studies (14.4)*]. Patients were 19 to 75 years of age (mean 44 years of age), and 91% were female. Table 9 displays the most common adverse reactions from NMOSD Study 1 that occurred in ≥5% of Soliris-treated patients and at a greater frequency than on placebo.

**Table 9: Adverse Reactions Reported in 5% or More of Soliris-Treated Patients in NMOSD Study 1 and at a Greater Frequency than in Placebo-Treated Patients**

	Soliris (N=96) N (%)	Placebo (N=47) N (%)
<b>Events/Patients</b>		
	1295/88	617/45
<b>Blood and lymphatic system disorders</b>		
Leukopenia	5 (5)	1 (2)
Lymphopenia	5 (5)	0 (0)
<b>Eye disorders</b>		
Cataract	6 (6)	2 (4)
<b>Gastrointestinal disorders</b>		
Diarrhea	15 (16)	7 (15)
Constipation	9 (9)	3 (6)
<b>General disorders and administration site conditions</b>		
Asthenia	5 (5)	1 (2)
<b>Infections and infestations</b>		
Upper respiratory tract infection	28 (29)	6 (13)
Nasopharyngitis	20 (21)	9 (19)
Influenza	11 (11)	2 (4)
Pharyngitis	10 (10)	3 (6)
Bronchitis	9 (9)	3 (6)
Conjunctivitis	9 (9)	4 (9)
Cystitis	8 (8)	1 (2)
Hordeolum	7 (7)	0 (0)
Sinusitis	6 (6)	0 (0)
Cellulitis	5 (5)	1 (2)
<b>Injury, poisoning and procedural complications</b>		
Contusion	10 (10)	2 (4)
<b>Metabolism and nutrition disorders</b>		
Decreased appetite	5 (5)	1 (2)

**Soliris  
(N=96)  
N (%)**

**Placebo  
(N=47)  
N (%)**

**Musculoskeletal and connective tissue disorders**

Back pain	14 (15)	6 (13)
Arthralgia	11 (11)	5 (11)
Musculoskeletal pain	6 (6)	0 (0)
Muscle spasms	5 (5)	2 (4)

**Nervous system disorders**

Dizziness	14 (15)	6 (13)
Paraesthesia	8 (8)	3 (6)

**Respiratory, thoracic and mediastinal disorders**

Oropharyngeal pain	7 (7)	2 (4)
--------------------	-------	-------

**Skin and subcutaneous tissue disorders**

Alopecia	5 (5)	2 (4)
----------	-------	-------

**6.2 Immunogenicity**

As with all proteins, there is a potential for immunogenicity. The detection of antibody formation is highly dependent on the sensitivity and specificity of the assay. Additionally, the observed incidence of antibody (including neutralizing antibody) positivity in an assay may be influenced by several factors including assay methodology, sample handling, timing of sample collection, concomitant medications, and underlying disease. For these reasons, comparison of the incidence of antibodies to eculizumab in the studies described below with the incidence of antibodies in other studies or to other products may be misleading.

The immunogenicity of Soliris has been evaluated using two different immunoassays for the detection of anti-eculizumab antibodies: a direct enzyme-linked immunosorbent assay (ELISA) using the Fab fragment of eculizumab as target was used for the PNH indication; and an electro-chemiluminescence (ECL) bridging assay using the eculizumab whole molecule as target was used for the aHUS, gMG, and NMOSD indications, as well as for additional patients with PNH. In the PNH population, antibodies to Soliris were detected in 3/196 (2%) patients using the ELISA assay and in 5/161 (3%) patients using the ECL assay. In the aHUS population, antibodies to Soliris were detected in 3/100 (3%) patients using the ECL assay. None of the 62 patients with gMG had antibodies to Soliris detected following the 26-week active treatment. Two of the 96 (2%) Soliris-treated patients with NMOSD had antibodies to Soliris detected during the entire treatment period.

An ECL based neutralizing assay with a low sensitivity of 2 mcg/mL was performed to detect neutralizing antibodies for the 5 patients with PNH, the 3 patients with aHUS, and the 2 patients with NMOSD with anti-eculizumab antibody positive samples using the ECL assay. Two of 161 patients with PNH (1.2%) and 1 of 100 patients with aHUS (1%), and none of the 96 patients with NMOSD had low positive values for neutralizing antibodies.

No apparent correlation of antibody development to clinical response was observed.

**6.3 Postmarketing Experience**

The following adverse reactions have been identified during post-approval use of Soliris. Because these reactions are reported voluntarily from a population of uncertain size, it is not always possible to reliably estimate their frequency or establish a causal relationship to Soliris exposure.

Fatal or serious infections: *Neisseria gonorrhoeae*, *Neisseria meningitidis*, *Neisseria sicca/subflava*, *Neisseria spp* unspecified

**8 USE IN SPECIFIC POPULATIONS**

**8.1 Pregnancy**

**Risk Summary**

Limited data on outcomes of pregnancies that have occurred following Soliris use in pregnant women have not identified a concern for specific adverse developmental outcomes (see *Data*). There are risks to the mother and fetus associated with untreated paroxysmal nocturnal hemoglobinuria (PNH) and atypical hemolytic uremic syndrome (aHUS) in pregnancy (see *Clinical Considerations*). Animal studies using a mouse analogue of the Soliris molecule (murine anti-C5 antibody) showed increased rates of developmental abnormalities and an increased rate of dead and moribund offspring at doses 2-8 times the human dose (see *Data*).

The estimated background risk of major birth defects and miscarriage for the indicated populations is unknown. All pregnancies have a background risk of birth defect, loss, or other adverse outcomes. In the U.S. general population, the estimated background risk of major birth defect and miscarriage in clinically recognized pregnancies is 2-4% and 15-20%, respectively.

**Clinical Considerations**

**Disease-associated maternal and/or fetal/neonatal risk**

PNH in pregnancy is associated with adverse maternal outcomes, including worsening cytopenias, thrombotic events, infections, bleeding, miscarriages and increased maternal mortality, and adverse fetal outcomes, including fetal death and premature delivery.

aHUS in pregnancy is associated with adverse maternal outcomes, including pre-eclampsia and preterm delivery, and adverse fetal/neonatal outcomes, including intrauterine growth restriction (IUGR), fetal death and low birth weight.

**Data**

**Human Data**

A pooled analysis of prospectively (50.3%) and retrospectively (49.7%) collected data in more than 300 pregnant women with live births following exposure to Soliris have not suggested safety concerns. However, these data cannot definitively exclude any drug-associated risk during pregnancy, because of the limited sample size.

**Animal Data**

Animal reproduction studies were conducted in mice using doses of a murine anti-C5 antibody that approximated 2-4 times (low dose) and 4-8 times (high dose) the recommended human Soliris dose, based on a body weight comparison. When animal exposure to the antibody occurred in the time period from before mating until early gestation, no decrease in fertility or reproductive performance was observed. When maternal exposure to the antibody occurred during organogenesis, two cases of retinal dysplasia and one case of umbilical hernia were observed among 230 offspring born to mothers exposed to the higher antibody dose; however, the exposure did not increase fetal loss or neonatal death. When maternal exposure to the antibody occurred in the time period from implantation through weaning, a

higher number of male offspring became moribund or died (1/25 controls, 2/25 low dose group, 5/25 high dose group). Surviving offspring had normal development and reproductive function.

## 8.2 Lactation

### Risk Summary

Although limited published data does not report detectable levels of eculizumab in human milk, maternal IgG is known to be present in human milk. Available information is insufficient to inform the effect of eculizumab on the breastfed infant. There are no data on the effects of eculizumab on milk production. The developmental and health benefits of breastfeeding should be considered along with the mother's clinical need for Soliris and any potential adverse effects on the breastfed child from eculizumab or from the underlying maternal condition.

## 8.4 Pediatric Use

Safety and effectiveness of Soliris for the treatment of PNH, gMG, or NMOsD in pediatric patients have not been established.

The safety and effectiveness of Soliris for the treatment of aHUS have been established in pediatric patients. Use of Soliris in pediatric patients for this indication is supported by evidence from four adequate and well-controlled clinical studies assessing the safety and effectiveness of Soliris for the treatment of aHUS. The studies included a total of 47 pediatric patients (ages 2 months to 17 years). The safety and effectiveness of Soliris for the treatment of aHUS appear similar in pediatric and adult patients [see *Adverse Reactions (6.1)*, and *Clinical Studies (14.2)*].

Administer vaccinations for the prevention of infection due to *Neisseria meningitidis*, *Streptococcus pneumoniae* and *Haemophilus influenzae* type b (Hib) according to ACIP guidelines [see *Warnings and Precautions (5.1, 5.2)*].

## 8.5 Geriatric Use

Fifty-one patients 65 years of age or older (15 with PNH, 4 with aHUS, 26 with gMG, and 6 with NMOsD) were treated with Soliris in clinical trials in the approved indications. Although there were no apparent age-related differences observed in these studies, the number of patients aged 65 and over is not sufficient to determine whether they respond differently from younger patients.

## 11 DESCRIPTION

Eculizumab, a complement inhibitor, is a recombinant humanized monoclonal IgG2/4<sub>k</sub> antibody produced by murine myeloma cell culture and purified by standard bioprocess technology. Eculizumab contains human constant regions from human IgG2 sequences and human IgG4 sequences and murine complementarity-determining regions grafted onto the human framework light- and heavy-chain variable regions. Eculizumab is composed of two 448 amino acid heavy chains and two 214 amino acid light chains and has a molecular weight of approximately 148 kDa.

Soliris (eculizumab) injection is a sterile, clear, colorless, preservative-free 10 mg/mL solution for intravenous infusion and is supplied in 30-mL single-dose vials. The product is formulated at pH 7 and each 30 mL vial contains 300 mg of eculizumab, polysorbate 80 (6.6 mg) (vegetable origin), sodium chloride (263.1 mg), sodium phosphate dibasic (53.4 mg), sodium phosphate monobasic (13.8 mg), and Water for Injection, USP.

## 12 CLINICAL PHARMACOLOGY

### 12.1 Mechanism of Action

Eculizumab, the active ingredient in Soliris, is a monoclonal antibody that specifically binds to the complement protein C5 with high affinity, thereby inhibiting its cleavage to C5a and C5b and preventing the generation of the terminal complement complex C5b-9.

Soliris inhibits terminal complement-mediated intravascular hemolysis in PNH patients and complement-mediated thrombotic microangiopathy (TMA) in patients with aHUS.

The precise mechanism by which eculizumab exerts its therapeutic effect in gMG patients is unknown, but is presumed to involve reduction of terminal complement complex C5b-9 deposition at the neuromuscular junction.

The precise mechanism by which eculizumab exerts its therapeutic effect in NMOsD is unknown, but is presumed to involve inhibition of aquaporin-4-antibody induced terminal complement C5b-9 deposition.

### 12.2 Pharmacodynamics

In the placebo-controlled clinical study (PNH Study 1), Soliris when administered as recommended reduced serum LDH levels from 2200 ± 1034 U/L (mean ± SD) at baseline to 700 ± 388 U/L by week one and maintained the effect through the end of the study at week 26 (327 ± 433 U/L) in patients with PNH. In the single arm clinical study (PNH Study 2), the effect was maintained through week 52 [see *Clinical Studies (14)*].

In patients with PNH, aHUS, gMG, and NMOsD, free C5 concentrations of < 0.5 mcg/mL was correlated with complete blockade of terminal complement activity.

### 12.3 Pharmacokinetics

Following intravenous maintenance doses of 900 mg once every 2 weeks in patients with PNH, the week 26 observed mean ± SD serum eculizumab maximum concentration (C<sub>max</sub>) was 194 ± 76 mcg/mL and the trough concentration (C<sub>trough</sub>) was 97 ± 60 mcg/mL. Following intravenous maintenance doses of 1200 mg once every 2 weeks in patients with aHUS, the week 26 observed mean ± SD C<sub>trough</sub> was 242 ± 101 mcg/mL. Following intravenous maintenance doses of 1200 mg once every 2 weeks in patients with gMG, the week 26 observed mean ± SD C<sub>max</sub> was 783 ± 288 mcg/mL and the C<sub>trough</sub> was 341 ± 172 mcg/mL. Following intravenous maintenance doses of 1200 mg once every 2 weeks in patients with NMOsD, at week 24, the observed mean ± SD C<sub>max</sub> was 877 ± 331 and the C<sub>trough</sub> was 429 ± 188 mcg/mL.

Steady state was achieved 4 weeks after starting eculizumab treatment, with accumulation ratio of approximately 2-fold in all studied indications. Population pharmacokinetic analyses showed that eculizumab pharmacokinetics were dose-linear and time-independent over the 600 mg to 1200 mg dose range, with inter-individual variability of 21% to 38%.

#### Distribution

The eculizumab volume of distribution for a typical 70 kg patient was 5 L to 8 L.

#### Elimination

The half-life of eculizumab was approximately 270 h to 414 h.

Plasma exchange or infusion increased the clearance of eculizumab by approximately 250-fold and reduced the half-life to 1.26 h. Supplemental dosing is recommended when Soliris is administered to patients receiving plasma exchange or infusion [see *Dosage and Administration (2.5)*].

## Specific Populations

### Age, Sex, and Race:

The pharmacokinetics of eculizumab were not affected by age (2 months to 85 years), sex, or race.

### Renal Impairment:

Renal function did not affect the pharmacokinetics of eculizumab in PNH (creatinine clearance of 8 mL/min to 396 mL/min calculated using Cockcroft-Gault formula), aHUS (estimated glomerular filtration rate [eGFR] of 5 mL/min/1.73 m<sup>2</sup> to 105 mL/min/1.73 m<sup>2</sup> using the Modification of Diet in Renal Disease [MDRD] formula), or gMG patients (eGFR of 44 mL/min/1.73 m<sup>2</sup> to 168 mL/min/1.73 m<sup>2</sup> using MDRD formula).

### Drug Interactions

Intravenous immunoglobulin (IVIg) treatment may interfere with the endosomal neonatal Fc receptor (FcRn) recycling mechanism of monoclonal antibodies such as eculizumab and thereby decrease serum eculizumab concentrations. Drug interaction studies have not been conducted with eculizumab in patients treated with IVIg.

## 13 NONCLINICAL TOXICOLOGY

### 13.1 Carcinogenesis, Mutagenesis, Impairment of Fertility

Long-term animal carcinogenicity studies of eculizumab have not been conducted.

Genotoxicity studies have not been conducted with eculizumab.

Effects of eculizumab upon fertility have not been studied in animals. Intravenous injections of male and female mice with a murine anti-C5 antibody at up to 4-8 times the equivalent of the clinical dose of Soliris had no adverse effects on mating or fertility.

## 14 CLINICAL STUDIES

### 14.1 Paroxysmal Nocturnal Hemoglobinuria (PNH)

The safety and efficacy of Soliris in PNH patients with hemolysis were assessed in a randomized, double-blind, placebo-controlled 26 week study (PNH Study 1, NCT00122330); PNH patients were also treated with Soliris in a single arm 52 week study (PNH Study 2, NCT00122304) and in a long-term extension study (E05-001, NCT00122317). Patients received meningococcal vaccination prior to receipt of Soliris. In all studies, the dose of Soliris was 600 mg study drug every 7 ± 2 days for 4 weeks, followed by 900 mg 7 ± 2 days later, then 900 mg every 14 ± 2 days for the study duration. Soliris was administered as an intravenous infusion over 25 - 45 minutes.

#### PNH Study 1:

PNH patients with at least four transfusions in the prior 12 months, flow cytometric confirmation of at least 10% PNH cells and platelet counts of at least 100,000/microliter were randomized to either Soliris (n = 43) or placebo (n = 44). Prior to randomization, all patients underwent an initial observation period to confirm the need for RBC transfusion and to identify the hemoglobin concentration (the "set-point") which would define each patient's hemoglobin stabilization and transfusion outcomes. The hemoglobin set-point was less than or equal to 9 g/dL in patients with symptoms and was less than or equal to 7 g/dL in patients without symptoms. Endpoints related to hemolysis included the numbers of patients achieving hemoglobin stabilization, the number of RBC units transfused, fatigue, and health-related quality of life. To achieve a designation of hemoglobin stabilization, a patient had to maintain a hemoglobin concentration above the hemoglobin set-point and avoid any RBC transfusion for the entire 26 week period. Hemolysis was monitored mainly by the measurement of serum LDH levels, and the proportion of PNH RBCs was monitored by flow cytometry. Patients receiving anticoagulants and systemic corticosteroids at baseline continued these medications.

Major baseline characteristics were balanced (see Table 10).

**Table 10: PNH Study 1 Patient Baseline Characteristics**

Parameter	Study 1	
	Placebo (N=44)	Soliris (N=43)
Mean age (SD)	38 (13)	42 (16)
Gender - female (%)	29 (66)	23 (54)
History of aplastic anemia or myelodysplastic syndrome (%)	12 (27)	8 (19)
Patients with history of thrombosis (events)	8 (11)	9 (16)
Concomitant anticoagulants (%)	20 (46)	24 (56)
Concomitant steroids/immunosuppressant treatments (%)	16 (36)	14 (33)
Packed RBC units transfused per patient in previous 12 months (median (Q1,Q3))	17 (14, 25)	18 (12, 24)
Mean Hgb level (g/dL) at setpoint (SD)	8 (1)	8 (1)
Pre-treatment LDH levels (median, U/L)	2,234	2,032
Free hemoglobin at baseline (median, mg/dL)	46	41

Patients treated with Soliris had significantly reduced (p < 0.001) hemolysis resulting in improvements in anemia as indicated by increased hemoglobin stabilization and reduced need for RBC transfusions compared to placebo treated patients (see Table 11). These effects were seen among patients within each of the three pre-study RBC transfusion strata (4 - 14 units; 15 - 25 units; > 25 units). After 3 weeks of Soliris treatment, patients reported less fatigue and improved health-related quality of life. Because of the study sample size and duration, the effects of Soliris on thrombotic events could not be determined.

**Table 11: PNH Study 1 Results**

	Placebo (N=44)	Soliris (N=43)
Percentage of patients with stabilized hemoglobin levels	0	49
Packed RBC units transfused per patient (median) (range)	10 (2 - 21)	0 (0 - 16)
Transfusion avoidance (%)	0	51
LDH levels at end of study (median, U/L)	2,167	239
Free hemoglobin at end of study (median, mg/dL)	62	5

#### PNH Study 2 and Extension Study:

PNH patients with at least one transfusion in the prior 24 months and at least 30,000 platelets/microliter received Soliris over a 52-week period. Concomitant medications included anti-thrombotic agents in 63% of the patients and systemic corticosteroids in 40% of the patients. Overall, 96 of the 97 enrolled patients completed the study (one patient died following a thrombotic event). A reduction in intravascular hemolysis as measured by serum LDH levels was sustained for the treatment period and resulted in a reduced need for RBC transfusion and less fatigue. 187 Soliris-treated PNH patients were enrolled in

a long term extension study. All patients sustained a reduction in intravascular hemolysis over a total Soliris exposure time ranging from 10 to 54 months. There were fewer thrombotic events with Soliris treatment than during the same period of time prior to treatment. However, the majority of patients received concomitant anticoagulants; the effects of anticoagulant withdrawal during Soliris therapy was not studied [see Warnings and Precautions (5.4)].

#### 14.2 Atypical Hemolytic Uremic Syndrome (aHUS)

Five single-arm studies [four prospective: C08-002A/B (NCT00844545 and NCT00844844), C08-003A/B (NCT00838513 and NCT00844428), C10-003 (NCT01193348), and C10-004 (NCT01194973); and one retrospective: C09-001r (NCT01770951)] evaluated the safety and efficacy of Soliris for the treatment of aHUS. Patients with aHUS received meningococcal vaccination prior to receipt of Soliris or received prophylactic treatment with antibiotics until 2 weeks after vaccination. In all studies, the dose of Soliris in adult and adolescent patients was 900 mg every 7 ± 2 days for 4 weeks, followed by 1200 mg 7 ± 2 days later, then 1200 mg every 14 ± 2 days thereafter. The dosage regimen for pediatric patients weighing less than 40 kg enrolled in Study C09-001r and Study C10-003 was based on body weight [see Dosage and Administration (2.3)]. Efficacy evaluations were based on thrombotic microangiopathy (TMA) endpoints.

Endpoints related to TMA included the following:

- platelet count change from baseline
- hematologic normalization (*maintenance of normal platelet counts and LDH levels for at least four weeks*)
- complete TMA response (*hematologic normalization plus at least a 25% reduction in serum creatinine for a minimum of four weeks*)
- TMA-event free status (*absence for at least 12 weeks of a decrease in platelet count of >25% from baseline, plasma exchange or plasma infusion, and new dialysis requirement*)
- Daily TMA intervention rate (*defined as the number of plasma exchange or plasma infusion interventions and the number of new dialyses required per patient per day*).

#### aHUS Resistant to PE/PI (Study C08-002A/B)

Study C08-002A/B enrolled patients who displayed signs of thrombotic microangiopathy (TMA) despite receiving at least four PE/PI treatments the week prior to screening. One patient had no PE/PI the week prior to screening because of PE/PI intolerance. In order to qualify for enrollment, patients were required to have a platelet count  $\leq 150 \times 10^9/L$ , evidence of hemolysis such as an elevation in serum LDH, and serum creatinine above the upper limits of normal, without the need for chronic dialysis. The median patient age was 28 (range: 17 to 68 years). Patients enrolled in Study C08-002A/B were required to have ADAMTS13 activity level above 5%; observed range of values in the trial were 70%-121%. Seventy-six percent of patients had an identified complement regulatory factor mutation or auto-antibody. Table 12 summarizes the key baseline clinical and disease-related characteristics of patients enrolled in Study C08-002A/B.

**Table 12: Baseline Characteristics of Patients Enrolled in Study C08-002A/B**

Parameter	C08-002A/B (N=17)
Time from aHUS diagnosis until screening in months, median (min, max)	10 (0.26, 236)
Time from current clinical TMA manifestation until screening in months, median (min, max)	<1 (<1, 4)
Baseline platelet count ( $\times 10^9/L$ ), median (range)	118 (62, 161)
Baseline LDH (U/L), median (range)	269 (134, 634)

Patients in Study C08-002A/B received Soliris for a minimum of 26 weeks. In Study C08-002A/B, the median duration of Soliris therapy was approximately 100 weeks (range: 2 weeks to 145 weeks).

Renal function, as measured by eGFR, was improved and maintained during Soliris therapy. The mean eGFR ( $\pm$  SD) increased from  $23 \pm 15$  mL/min/1.73m<sup>2</sup> at baseline to  $56 \pm 40$  mL/min/1.73m<sup>2</sup> by 26 weeks; this effect was maintained through 2 years ( $56 \pm 30$  mL/min/1.73m<sup>2</sup>). Four of the five patients who required dialysis at baseline were able to discontinue dialysis.

Reduction in terminal complement activity and an increase in platelet count relative to baseline were observed after commencement of Soliris. Soliris reduced signs of complement-mediated TMA activity, as shown by an increase in mean platelet counts from baseline to 26 weeks. In Study C08-002A/B, mean platelet count ( $\pm$  SD) increased from  $109 \pm 32 \times 10^9/L$  at baseline to  $169 \pm 72 \times 10^9/L$  by one week; this effect was maintained through 26 weeks ( $210 \pm 68 \times 10^9/L$ ), and 2 years ( $205 \pm 46 \times 10^9/L$ ). When treatment was continued for more than 26 weeks, two additional patients achieved Hematologic Normalization as well as Complete TMA response. Hematologic Normalization and Complete TMA response were maintained by all responders. In Study C08-002A/B, responses to Soliris were similar in patients with and without identified mutations in genes encoding complement regulatory factor proteins.

Table 13 summarizes the efficacy results for Study C08-002A/B.

**Table 13: Efficacy Results for Study C08-002A/B**

Efficacy Parameter	Study C08-002A/B at 26 wks <sup>1</sup> (N=17)	Study C08-002A/B at 2 yrs <sup>2</sup> (N=17)
Complete TMA response, n (%)	11 (65)	13 (77)
Median Duration of complete TMA response, weeks (range)	38 (25, 56)	99 (25, 139)
eGFR improvement $\geq 15$ mL/min/1.73 m <sup>2</sup> , n (%)	9 (53)	10 (59)
Median duration of eGFR improvement, days (range)	251 (70, 392)	ND
Hematologic normalization, n (%)	13 (76)	15 (88)
Median Duration of hematologic normalization, weeks (range)	37 (25, 62)	99 (25, 145)
TMA event-free status, n (%)	15 (88)	15 (88)
Daily TMA intervention rate, median (range)		
Before eculizumab	0.82 (0.04, 1.52)	0.82 (0.04, 1.52)
On eculizumab treatment	0 (0, 0.31)	0 (0, 0.36)

<sup>1</sup>At data cut-off (September 8, 2010).

<sup>2</sup>At data cut-off (April 20, 2012).

#### aHUS Sensitive to PE/PI (Study C08-003A/B)

Study C08-003A/B enrolled patients undergoing chronic PE/PI who generally did not display hematologic signs of ongoing thrombotic microangiopathy (TMA). All patients had received PT at least once every two weeks, but no more than three times per week, for a minimum of eight weeks prior to the first Soliris dose. Patients on chronic dialysis were permitted to enroll in Study C08-003A/B. The median patient age was

28 years (range: 13 to 63 years). Patients enrolled in Study C08-003A/B were required to have ADAMTS13 activity level above 5%; observed range of values in the trial were 37%-118%. Seventy percent of patients had an identified complement regulatory factor mutation or auto-antibody. Table 14 summarizes the key baseline clinical and disease-related characteristics of patients enrolled in Study C08-003A/B.

**Table 14: Baseline Characteristics of Patients Enrolled in Study C08-003A/B**

Parameter	Study C08-003A/B (N=20)
Time from aHUS diagnosis until screening in months, median (min, max)	48 (0.66, 286)
Time from current clinical TMA manifestation until screening in months, median (min, max)	9 (1, 45)
Baseline platelet count ( $\times 10^9/L$ ), median (range)	218 (105, 421)
Baseline LDH (U/L), median (range)	200 (151, 391)

Patients in Study C08-003A/B received Soliris for a minimum of 26 weeks. In Study C08-003A/B, the median duration of Soliris therapy was approximately 114 weeks (range: 26 to 129 weeks).

Renal function, as measured by eGFR, was maintained during Soliris therapy. The mean eGFR ( $\pm$  SD) was  $31 \pm 19$  mL/min/1.73m<sup>2</sup> at baseline, and was maintained through 26 weeks ( $37 \pm 21$  mL/min/1.73m<sup>2</sup>) and 2 years ( $40 \pm 18$  mL/min/1.73m<sup>2</sup>). No patient required new dialysis with Soliris.

Reduction in terminal complement activity was observed in all patients after the commencement of Soliris. Soliris reduced signs of complement-mediated TMA activity, as shown by an increase in mean platelet counts from baseline to 26 weeks. Platelet counts were maintained at normal levels despite the elimination of PE/PI. The mean platelet count ( $\pm$  SD) was  $228 \pm 78 \times 10^9/L$  at baseline,  $233 \pm 69 \times 10^9/L$  at week 26, and  $224 \pm 52 \times 10^9/L$  at 2 years. When treatment was continued for more than 26 weeks, six additional patients achieved Complete TMA response. Complete TMA Response and Hematologic Normalization were maintained by all responders. In Study C08-003A/B, responses to Soliris were similar in patients with and without identified mutations in genes encoding complement regulatory factor proteins.

Table 15 summarizes the efficacy results for Study C08-003A/B.

**Table 15: Efficacy Results for Study C08-003A/B**

Efficacy Parameter	Study C08-003A/B at 26 wks <sup>1</sup> (N=20)	Study C08-003A/B at 2 yrs <sup>2</sup> (N=20)
Complete TMA response, n (%)	5 (25)	11 (55)
Median duration of complete TMA response, weeks (range)	32 (12, 38)	68 (38, 109)
eGFR improvement $\geq 15$ mL/min/1.73 m <sup>2</sup> , n (%)	1 (5)	8 (40)
TMA Event-free status n (%)	16 (80)	19 (95)
Daily TMA intervention rate, median (range)		
Before eculizumab	0.23 (0.05, 1.07)	0.23 (0.05, 1.07)
On eculizumab treatment	0	0 (0, 0.01)
Hematologic normalization <sup>4</sup> , n (%)	18 (90)	18 (90)
Median duration of hematologic normalization, weeks (range) <sup>3</sup>	38 (22, 52)	114 (33, 125)

<sup>1</sup>At data cut-off (September 8, 2010).

<sup>2</sup>At data cut-off (April 20, 2012).

<sup>3</sup>Calculated at each post-dose day of measurement (excluding Days 1 to 4) using a repeated measurement ANOVA model.

<sup>4</sup>In Study C08-003A/B, 85% of patients had normal platelet counts and 80% of patients had normal serum LDH levels at baseline, so hematologic normalization in this population reflects maintenance of normal parameters in the absence of PE/PI.

#### Retrospective Study in Patients with aHUS (C09-001r)

The efficacy results for the aHUS retrospective study (Study C09-001r) were generally consistent with results of the two prospective studies. Soliris reduced signs of complement-mediated TMA activity, as shown by an increase in mean platelet counts from baseline. Mean platelet count ( $\pm$  SD) increased from  $171 \pm 83 \times 10^9/L$  at baseline to  $233 \pm 109 \times 10^9/L$  after one week of therapy; this effect was maintained through 26 weeks (mean platelet count ( $\pm$  SD) at week 26:  $254 \pm 79 \times 10^9/L$ ).

A total of 19 pediatric patients (ages 2 months to 17 years) received Soliris in Study C09-001r. The median duration of Soliris therapy was 16 weeks (range 4 to 70 weeks) for children <2 years of age (n=5), 31 weeks (range 19 to 63 weeks) for children 2 to <12 years of age (n=10), and 38 weeks (range 1 to 69 weeks) for patients 12 to <18 years of age (n=4). Fifty-three percent of pediatric patients had an identified complement regulatory factor mutation or auto-antibody.

Overall, the efficacy results for these pediatric patients appeared consistent with what was observed in patients enrolled in Studies C08-002A/B and C08-003A/B (Table 16). No pediatric patient required new dialysis during treatment with Soliris.

**Table 16: Efficacy Results in Pediatric Patients Enrolled in Study C09-001r**

Efficacy Parameter	<2 yrs (N=5)	2 to <12 yrs (N=10)	12 to <18 yrs (N=4)	Total (N=19)
Complete TMA response, n (%)	2 (40)	5 (50)	1 (25)	8 (42)
Patients with eGFR improvement $\geq 15$ mL/min/1.73 m <sup>2</sup> , n (%) <sup>2</sup>	2 (40)	6 (60)	1 (25)	9 (47)
Platelet count normalization, n (%) <sup>1</sup>	4 (80)	10 (100)	3 (75)	17 (89)
Hematologic Normalization, n (%)	2 (40)	5 (50)	1 (25)	8 (42)
Daily TMA intervention rate, median (range)				
Before eculizumab	1 (0, 2)	<1 (0.07, 1.46)	<1 (0, 1)	0.31 (0.00, 2.38)
On eculizumab treatment	<1 (0, <1)	0 (0, <1)	0 (0, <1)	0.00 (0.00, 0.08)

<sup>1</sup>Platelet count normalization was defined as a platelet count of at least  $150,000 \times 10^9/L$  on at least two consecutive measurements spanning a period of at least 4 weeks.

<sup>2</sup>Of the 9 patients who experienced an eGFR improvement of at least  $15$  mL/min/1.73 m<sup>2</sup>, one received dialysis throughout the study period and another received Soliris as prophylaxis following renal allograft transplantation.

### Adult Patients with aHUS (Study C10-004)

Study C10-004 enrolled patients who displayed signs of thrombotic microangiopathy (TMA). In order to qualify for enrollment, patients were required to have a platelet count < lower limit of normal range (LLN), evidence of hemolysis such as an elevation in serum LDH, and serum creatinine above the upper limits of normal, without the need for chronic dialysis. The median patient age was 35 (range: 18 to 80 years). All patients enrolled in Study C10-004 were required to have ADAMTS13 activity level above 5%; observed range of values in the trial were 28%-116%. Fifty-one percent of patients had an identified complement regulatory factor mutation or auto-antibody. A total of 35 patients received PE/PI prior to eculizumab. Table 17 summarizes the key baseline clinical and disease-related characteristics of patients enrolled in Study C10-004.

**Table 17: Baseline Characteristics of Patients Enrolled in Study C10-004**

Parameter	Study C10-004 (N=41)
Time from aHUS diagnosis until start of study drug in months, median (range)	0.79 (0.03 – 311)
Time from current clinical TMA manifestation until first study dose in months, median (range)	0.52 (0.03-19)
Baseline platelet count ( $\times 10^9/L$ ), median (range)	125 (16 – 332)
Baseline LDH (U/L), median (range)	375 (131 – 3318)

Patients in Study C10-004 received Soliris for a minimum of 26 weeks. In Study C10-004, the median duration of Soliris therapy was approximately 50 weeks (range: 13 weeks to 86 weeks).

Renal function, as measured by eGFR, was improved during Soliris therapy. The mean eGFR ( $\pm$  SD) increased from  $17 \pm 12$  mL/min/1.73m<sup>2</sup> at baseline to  $47 \pm 24$  mL/min/1.73m<sup>2</sup> by 26 weeks. Twenty of the 24 patients who required dialysis at study baseline were able to discontinue dialysis during Soliris treatment.

Reduction in terminal complement activity and an increase in platelet count relative to baseline were observed after commencement of Soliris. Soliris reduced signs of complement-mediated TMA activity, as shown by an increase in mean platelet counts from baseline to 26 weeks. In Study C10-004, mean platelet count ( $\pm$  SD) increased from  $119 \pm 66 \times 10^9/L$  at baseline to  $200 \pm 84 \times 10^9/L$  by one week; this effect was maintained through 26 weeks (mean platelet count ( $\pm$  SD) at week 26:  $252 \pm 70 \times 10^9/L$ ). In Study C10-004, responses to Soliris were similar in patients with and without identified mutations in genes encoding complement regulatory factor proteins or auto-antibodies to factor H.

Table 18 summarizes the efficacy results for Study C10-004.

**Table 18: Efficacy Results for Study C10-004**

Efficacy Parameter	Study C10-004 (N=41)
Complete TMA response, n (%), 95% CI	23 (56) 40,72
Median duration of complete TMA response, weeks (range)	42 (6, 75)
Patients with eGFR improvement $\geq 15$ mL/min/1.73m <sup>2</sup> , n (%)	22 (54)
Hematologic Normalization, n (%)	36 (88)
Median duration of hematologic normalization, weeks (range)	46 (10, 75)
TMA Event-free Status, n (%)	37 (90)
Daily TMA Intervention Rate, median (range)	
Before eculizumab	0.63 (0, 1.38)
On eculizumab treatment	0 (0, 0.58)

### Pediatric and Adolescent Patients with aHUS (Study C10-003)

Study C10-003 enrolled patients who were required to have a platelet count < lower limit of normal range (LLN), evidence of hemolysis such as an elevation in serum LDH above the upper limits of normal, serum creatinine level  $\geq 97$  percentile for age without the need for chronic dialysis. The median patient age was 6.5 (range: 5 months to 17 years). Patients enrolled in Study C10-003 were required to have ADAMTS13 activity level above 5%; observed range of values in the trial were 38%-121%. Fifty percent of patients had an identified complement regulatory factor mutation or auto-antibody. A total of 10 patients received PE/PI prior to eculizumab. Table 19 summarizes the key baseline clinical and disease-related characteristics of patients enrolled in Study C10-003.

**Table 19: Baseline Characteristics of Patients Enrolled in Study C10-003**

Parameter	Patients 1 month to <12 years (N=18)	All Patients (N=22)
Time from aHUS diagnosis until start of study drug in months, median (range)	0.51 (0.03 – 58)	0.56 (0.03-191)
Time from current clinical TMA manifestation until first study dose in months, median (range)	0.23 (0.03 – 4)	0.2 (0.03-4)
Baseline platelet count ( $\times 10^9/L$ ), median (range)	110 (19-146)	91 (19-146)
Baseline LDH (U/L) median (range)	1510 (282-7164)	1244 (282-7164)

Patients in Study C10-003 received Soliris for a minimum of 26 weeks. In Study C10-003, the median duration of Soliris therapy was approximately 44 weeks (range: 1 dose to 88 weeks).

Renal function, as measured by eGFR, was improved during Soliris therapy. The mean eGFR ( $\pm$  SD) increased from  $33 \pm 30$  mL/min/1.73m<sup>2</sup> at baseline to  $98 \pm 44$  mL/min/1.73m<sup>2</sup> by 26 weeks. Among the 20 patients with a CKD stage  $\geq 2$  at baseline, 17 (85%) achieved a CKD improvement of  $\geq 1$  stage. Among the 16 patients ages 1 month to <12 years with a CKD stage  $\geq 2$  at baseline, 14 (88%) achieved a CKD improvement by  $\geq 1$  stage. Nine of the 11 patients who required dialysis at study baseline were able to discontinue dialysis during Soliris treatment. Responses were observed across all ages from 5 months to 17 years of age.

Reduction in terminal complement activity was observed in all patients after commencement of Soliris. Soliris reduced signs of complement-mediated TMA activity, as shown by an increase in mean platelet counts from baseline to 26 weeks. The mean platelet count ( $\pm$  SD) increased from  $88 \pm 42 \times 10^9/L$  at baseline to  $281 \pm 123 \times 10^9/L$  by one week; this effect was maintained through 26 weeks (mean platelet count ( $\pm$ SD) at week 26:  $293 \pm 106 \times 10^9/L$ ). In Study C10-003, responses to Soliris were similar in patients with and without identified mutations in genes encoding complement regulatory factor proteins or auto-antibodies to factor H.

Table 20 summarizes the efficacy results for Study C10-003.

**Table 20: Efficacy Results for Study C10-003**

Efficacy Parameter	Patients 1 month to <12 years (N=18)	All Patients (N=22)
Complete TMA response, n (%), 95% CI	11 (61) 36, 83	14 (64) 41, 83
Median Duration of complete TMA response, weeks (range) <sup>1</sup>	40 (14, 77)	37 (14, 77)
eGFR improvement $\geq 15$ mL/min/1.73m <sup>2</sup> n (%)	16 (89)	19 (86)
Complete Hematologic Normalization, n (%)	14 (78)	18 (82)
Median Duration of complete hematologic normalization, weeks (range)	38 (14, 77)	38 (14, 77)
TMA Event-Free Status, n (%)	17 (94)	21 (95)
Daily TMA Intervention rate, median (range)		
Before eculizumab treatment	0.2 (0, 1.7)	0.4 (0, 1.7)
On eculizumab treatment	0 (0, 0.01)	0 (0, 0.01)

<sup>1</sup>Through data cutoff (October 12, 2012).

### 14.3 Generalized Myasthenia Gravis (gMG)

The efficacy of Soliris for the treatment of gMG was established in gMG Study 1 (NCT01997229), a 26-week randomized, double-blind, parallel-group, placebo-controlled, multi-center trial that enrolled patients who met the following criteria at screening:

1. Positive serologic test for anti-AChR antibodies,
2. Myasthenia Gravis Foundation of America (MGFA) Clinical Classification Class II to IV,
3. MG-Activities of Daily Living (MG-ADL) total score  $\geq 6$ ,
4. Failed treatment over 1 year or more with 2 or more immunosuppressive therapies (ISTs) either in combination or as monotherapy, or failed at least 1 IST and required chronic plasmapheresis or plasma exchange (PE) or intravenous immunoglobulin (IVIg).

A total of 62 patients were randomized to receive Soliris treatment and 63 were randomized to receive placebo. Baseline characteristics were similar between treatment groups, including age at diagnosis (38 years in each group), gender [66% female (eculizumab) versus 65% female (placebo)], and duration of gMG [9.9 (eculizumab) versus 9.2 (placebo) years]. Over 95% of patients in each group were receiving acetylcholinesterase (AChE) inhibitors, and 98% were receiving immunosuppressant therapies (ISTs). Approximately 50% of each group had been previously treated with at least 3 ISTs.

Soliris was administered according to the recommended dosage regimen [see *Dosage and Administration* (2.4)].

The primary efficacy endpoint for gMG Study 1 was a comparison of the change from baseline between treatment groups in the Myasthenia Gravis-Specific Activities of Daily Living scale (MG-ADL) total score at Week 26. The MG-ADL is a categorical scale that assesses the impact on daily function of 8 signs or symptoms that are typically affected in gMG. Each item is assessed on a 4-point scale where a score of 0 represents normal function and a score of 3 represents loss of ability to perform that function (total score 0-24). A statistically significant difference favoring Soliris was observed in the mean change from baseline to Week 26 in MG-ADL total scores [-4.2 points in the Soliris-treated group compared with -2.3 points in the placebo-treated group ( $p=0.006$ )].

A key secondary endpoint in gMG Study 1 was the change from baseline in the Quantitative Myasthenia Gravis (QMG) total score at Week 26. The QMG is a 13-item categorical scale assessing muscle weakness. Each item is assessed on a 4-point scale where a score of 0 represents no weakness and a score of 3 represents severe weakness (total score 0-39). A statistically significant difference favoring Soliris was observed in the mean change from baseline to Week 26 in QMG total scores [-4.6 points in the Soliris-treated group compared with -1.6 points in the placebo-treated group ( $p=0.001$ )].

The results of the analysis of the MG-ADL and QMG from gMG Study 1 are shown in Table 21.

**Table 21: Analysis of Change from Baseline to Week 26 in MG-ADL and QMG Total Scores in gMG Study 1**

Efficacy Endpoints	Soliris-LS Mean (N=62) (SEM)	Placebo-LS Mean (N=63) (SEM)	Soliris change relative to placebo – LS Mean Difference (95% CI)	p-values
MG-ADL	-4.2 (0.49)	-2.3 (0.48)	-1.9 (-3.3, -0.6)	(0.006 <sup>a</sup> ; 0.014 <sup>b</sup> )
QMG	-4.6 (0.60)	-1.6 (0.59)	-3.0 (-4.6, -1.3)	(0.001 <sup>a</sup> ; 0.005 <sup>b</sup> )

SEM= Standard Error of the Mean;

Soliris-LSMean = least square mean for the treatment group;

Placebo-LSMean = least square mean for the placebo group;

LSMean-Difference (95% CI) = Difference in least square mean with 95% confidence interval;

p-values (testing the null hypothesis that there is no difference between the two treatment arms a: in least square means at Week 26 using a repeated measure analysis; b: in ranks at Week 26 using a worst rank analysis).

In gMG Study 1, a clinical response was defined in the MG-ADL total score as at least a 3-point improvement and in QMG total score as at least a 5-point improvement. The proportion of clinical responders at Week 26 with no rescue therapy was statistically significantly higher for Soliris compared to placebo for both measures. For both endpoints, and also at higher response thresholds ( $\geq 4$ -, 5-, 6-, 7-, or 8-point improvement on MG-ADL, and  $\geq 6$ -, 7-, 8-, 9-, or 10-point improvement on QMG), the proportion of clinical responders was consistently greater for Soliris compared to placebo. Available data suggest that clinical response is usually achieved by 12 weeks of Soliris treatment.

### 14.4 Neuromyelitis Optica Spectrum Disorder (NMOSD)

The efficacy of Soliris for the treatment of NMOSD was established in NMOSD Study 1 (NCT01892345), a randomized, double-blind, placebo-controlled trial that enrolled 143 patients with NMOSD who were anti-AQP4 antibody positive and met the following criteria at screening:

1. History of at least 2 relapses in last 12 months or 3 relapses in the last 24 months, with at least 1 relapse in the 12 months prior to screening,
2. Expanded Disability Status Scale (EDSS) score  $\leq 7$  (consistent with the presence of at least limited ambulation with aid),

3. If on immunosuppressive therapy (IST), on a stable dose regimen,
4. The use of concurrent corticosteroids was limited to 20 mg per day or less,
5. Patients were excluded if they had been treated with rituximab or mitoxantrone within 3 months or with IVIg within 3 weeks prior to screening.

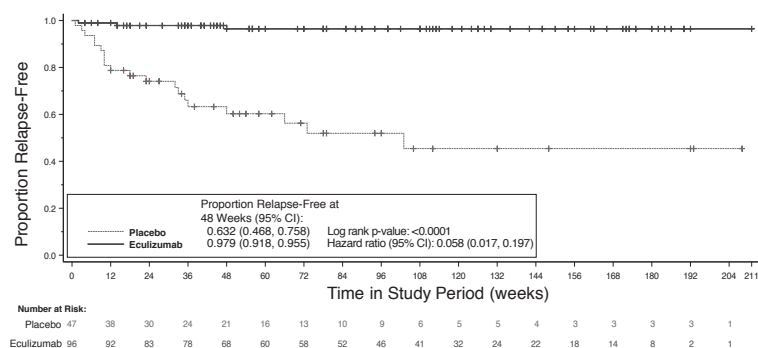
A total of 96 patients were randomized to receive Soliris treatment and 47 were randomized to receive placebo.

The baseline demographic and disease characteristics were balanced between treatment groups. During the treatment phase of the trial, 76% percent of patients received concomitant IST, including chronic corticosteroids; 24% of patients did not receive concomitant IST or chronic corticosteroids during the treatment phase of the trial.

Soliris was administered according to the recommended dosage regimen [see *Dosage and Administration* (2.4)].

The primary endpoint for NMOSD Study 1 was the time to the first adjudicated on-trial relapse. The time to the first adjudicated on-trial relapse was significantly longer in Soliris-treated patients compared to placebo-treated patients (relative risk reduction 94%; hazard ratio 0.058;  $p < 0.0001$ ) (Figure 1).

**Figure 1: Kaplan-Meier Survival Estimates for Time to First Adjudicated On-Trial Relapse – Full Analysis Set**



Note: Patients who did not experience an adjudicated on-trial relapse were censored at the end of the study period.

Abbreviations: CI = confidence interval

Soliris-treated patients experienced similar improvement in time to first adjudicated on-trial relapse with or without concomitant treatment. Soliris-treated patients had a 96% relative reduction in the adjudicated on-trial annualized relapse rate (ARR) compared to patients on placebo, as shown in Table 22.

**Table 22: Adjudicated On-trial Annualized Relapse Rate – Full Analysis Set**

Variable	Statistic	Placebo (N=47)	Soliris (N=96)
Total number of relapses	Sum	21	3
Adjusted adjudicated ARR <sup>a</sup>	Rate	0.350	0.016
Treatment effect <sup>a</sup>	Rate ratio (eculizumab/placebo)	...	0.045
	p-value	...	<0.0001

<sup>a</sup> Based on a Poisson regression adjusted for randomization strata and historical ARR in 24 months prior to screening.

ARR = annualized relapse rate

Compared to placebo-treated patients, Soliris-treated patients had reduced annualized rates of hospitalizations (0.04 for Soliris versus 0.31 for placebo), of corticosteroid administrations to treat acute relapses (0.07 for Soliris versus 0.42 for placebo), and of plasma exchange treatments (0.02 for Soliris versus 0.19 for placebo).

## 16 HOW SUPPLIED/STORAGE AND HANDLING

Soliris (eculizumab) injection is a sterile, preservative-free, clear, colorless solution supplied as one 300 mg/30 mL (10 mg/mL) single-dose vial per carton (NDC 25682-001-01).

Store Soliris vials refrigerated at 2°-8° C (36°-46° F) in the original carton to protect from light until time of use. Soliris vials may be stored in the original carton at controlled room temperature (not more than 25° C/77° F) for only a single period up to 3 days. Do not use beyond the expiration date stamped on the carton. Refer to *Dosage and Administration* (2) for information on the stability and storage of diluted solutions of Soliris.

**DO NOT FREEZE. DO NOT SHAKE.**

## 17 PATIENT COUNSELING INFORMATION

Advise the patient to read FDA-approved patient labeling (*Medication Guide*).

### Meningococcal Infection

Prior to treatment, patients should fully understand the risks and benefits of Soliris, in particular the risk of meningococcal infection. Ensure that patients receive the Medication Guide.

Inform patients that they are required to receive meningococcal vaccination at least 2 weeks prior to receiving the first dose of Soliris, if they have not previously been vaccinated. They are required to be revaccinated according to current medical guidelines for meningococcal vaccines use while on Soliris therapy. Inform patients that vaccination may not prevent meningococcal infection [see *Warnings and Precautions* (5.1)].

### Signs and Symptoms of Meningococcal Infection

Inform patients about the signs and symptoms of meningococcal infection, and strongly advise patients to seek immediate medical attention if these signs or symptoms occur.

These signs and symptoms are as follows:

- headache with nausea or vomiting
- headache and a fever
- headache with a stiff neck or stiff back
- fever

- fever and a rash
- confusion
- muscle aches with flu-like symptoms
- eyes sensitive to light

Inform patients that they will be given a Soliris Patient Safety Information Card that they should carry with them at all times. This card describes symptoms which, if experienced, should prompt the patient to immediately seek medical evaluation.

### Other Infections

Counsel patients about gonorrhea prevention and advise regular testing for patients at-risk.

Inform patients that there may be an increased risk of other types of infections, particularly those due to encapsulated bacteria.

Aspergillus infections have occurred in immunocompromised and neutropenic patients.

Inform parents or caregivers of children receiving Soliris for the treatment of aHUS that their child should be vaccinated against *Streptococcus pneumoniae* and *Haemophilus influenzae* type b (Hib) according to current medical guidelines.

### Discontinuation

Inform patients with PNH that they may develop hemolysis due to PNH when Soliris is discontinued and that they will be monitored by their healthcare professional for at least 8 weeks following Soliris discontinuation.

Inform patients with aHUS that there is a potential for TMA complications due to aHUS when Soliris is discontinued and that they will be monitored by their healthcare professional for at least 12 weeks following Soliris discontinuation. Inform patients who discontinue Soliris to keep the Soliris Patient Safety Information Card with them for three months after the last Soliris dose, because the increased risk of meningococcal infection persists for several weeks following discontinuation of Soliris.

Manufactured by:

Alexion Pharmaceuticals, Inc.

121 Seaport Boulevard

Boston, MA 02210 USA

US License Number 1743

This product, or its use, may be covered by one or more US patents, including US Patent No. 6,355,245, US Patent No. 9,732,149 and US Patent No. 9,718,880 in addition to others including patents pending.

# MEDICATION GUIDE

## SOLIRIS® (so-leer-is)

### (eculizumab)

## injection, for intravenous use

**What is the most important information I should know about SOLIRIS?**

**SOLIRIS is a medicine that affects your immune system. SOLIRIS can lower the ability of your immune system to fight infections.**

- **SOLIRIS increases your chance of getting serious and life-threatening meningococcal infections. Meningococcal infections may quickly become life-threatening and cause death if not recognized and treated early.**

1. You must receive meningococcal vaccines at least 2 weeks before your first dose of SOLIRIS if you have not already had this vaccine.
2. If your doctor decided that urgent treatment with SOLIRIS is needed, you should receive meningococcal vaccination as soon as possible.
3. If you have not been vaccinated and SOLIRIS therapy must be initiated immediately, you should also receive two weeks of antibiotics with your vaccinations.
4. If you had a meningococcal vaccine in the past, you might need additional vaccination before starting SOLIRIS. Your doctor will decide if you need additional meningococcal vaccination.
5. Meningococcal vaccines reduce the risk of meningococcal infection but do not prevent all meningococcal infections. Call your doctor or get emergency medical care right away if you get any of these signs and symptoms of a meningococcal infection:
  - headache with nausea or vomiting
  - headache and fever
  - headache with a stiff neck or stiff back
  - fever
  - fever and a rash
  - confusion
  - muscle aches with flu-like symptoms
  - eyes sensitive to light

**Your doctor will give you a Patient Safety Card about the risk of meningococcal infection.** Carry it with you at all times during treatment and for 3 months after your last SOLIRIS dose. Your risk of meningococcal infection may continue for several weeks after your last dose of SOLIRIS. It is important to show this card to any doctor or nurse who treats you. This will help them diagnose and treat you quickly.

**SOLIRIS is only available through a program called the SOLIRIS REMS.** Before you can receive SOLIRIS, your doctor must:

- enroll in the SOLIRIS REMS program
- counsel you about the risk of meningococcal infection
- give you information about the symptoms of meningococcal infection
- give you a **Patient Safety Card** about your risk of meningococcal infection, as discussed above
- make sure that you are vaccinated with the meningococcal vaccine and, if needed, get revaccinated with the meningococcal vaccine. Ask your doctor if you are not sure if you need to be revaccinated.

**SOLIRIS may also increase the risk of other types of serious infections.** If your child is treated with SOLIRIS, make sure that your child receives vaccinations against *Streptococcus pneumoniae* and *Haemophilus influenzae* type b (Hib). Certain people may be at risk of serious infections with gonorrhea. Talk to your doctor about whether you are at risk for gonorrhea infection, about gonorrhea prevention, and regular testing. Certain fungal infections (aspergillus) may also happen if you take SOLIRIS and have a weak immune system or a low white blood cell count.

### What is SOLIRIS?

SOLIRIS is a prescription medicine called a monoclonal antibody. SOLIRIS is used to treat:

- patients- with a disease called Paroxysmal Nocturnal Hemoglobinuria (PNH).
- adults and children with a disease called atypical Hemolytic Uremic Syndrome (aHUS). SOLIRIS is not for use in treating people with Shiga toxin E. coli related hemolytic uremic syndrome (STEC-HUS).
- adults with a disease called generalized myasthenia gravis (gMG) who are anti-acetylcholine receptor (AChR) antibody positive
- adults with a disease called neuromyelitis optica spectrum disorder (NMOSD) who are anti-aquaporin-4 (AQP4) antibody positive.

It is not known if SOLIRIS is safe and effective in children with PNH, gMG, or NMOSD.

### Who should not receive SOLIRIS?

Do not receive SOLIRIS if you:

- have a meningococcal infection.
- have not been vaccinated against meningitis infection unless your doctor decides that urgent treatment with SOLIRIS is needed. See “What is the most important information I should know about SOLIRIS?”

### Before you receive SOLIRIS, tell your doctor about all of your medical conditions, including if you:

- have an infection or fever.
- are pregnant or plan to become pregnant. It is not known if SOLIRIS will harm your unborn baby.
- are breastfeeding or plan to breastfeed. It is not known if SOLIRIS passes into your breast milk.

**Tell your doctor about all the medicines you take**, including prescription and over-the-counter medicines, vitamins, and herbal supplements. SOLIRIS and other medicines can affect each other causing side effects.

It is important that you:

- have all recommended vaccinations before you start SOLIRIS.
  - receive 2 weeks of antibiotics if you immediately start SOLIRIS.
  - stay up-to-date with all recommended vaccinations during treatment with SOLIRIS.
- Know the medications you take and the vaccines you receive. Keep a list of them to show your doctor and pharmacist when you get a new medicine.

### How should I receive SOLIRIS?

- SOLIRIS is given through a vein (I.V. or intravenous infusion) usually over 35 minutes in adults and 1 to 4 hours in pediatric patients. If you have an allergic reaction during your SOLIRIS infusion, your doctor may decide to give SOLIRIS more slowly or stop your infusion.
- If you are an adult, you will usually receive a SOLIRIS infusion by your doctor:
  - weekly for five weeks, then
  - every 2 weeks
- **If you** are less than 18 years of age, your doctor will decide how often you will receive SOLIRIS depending on your age and body weight
- After each infusion, you should be monitored for one hour for allergic reactions. See “What are the possible side effects of SOLIRIS?”
- If you miss a SOLIRIS infusion, call your doctor right away.
- **If you have PNH, your doctor will need to monitor you closely for at least 8 weeks after stopping SOLIRIS. Stopping treatment with SOLIRIS may cause breakdown of your red blood cells due to PNH.**

Symptoms or problems that can happen due to red blood cell breakdown include:

- drop in the number of your red blood cell counts
  - kidney problems
  - drop in your platelet counts
  - blood clots
  - confusion
  - difficulty breathing
  - chest pain
- **If you have aHUS, your doctor will need to monitor you closely during and for at least 12 weeks after stopping treatment for signs of worsening aHUS symptoms or problems related to abnormal clotting (thrombotic microangiopathy).**

Symptoms or problems that can happen with abnormal clotting may include:

- stroke
- difficulty breathing
- confusion
- kidney problems
- seizure
- swelling in arms or legs
- chest pain (angina)
- a drop in your platelet count

### What are the possible side effects of SOLIRIS?

**SOLIRIS can cause serious side effects including:**

- See “**What is the most important information I should know about SOLIRIS?**”
- **Serious allergic reactions.** Serious allergic reactions can happen during your SOLIRIS infusion. Tell your doctor or nurse right away if you get any of these symptoms during your SOLIRIS infusion:
  - chest pain
  - trouble breathing or shortness of breath
  - swelling of your face, tongue, or throat
  - feel faint or pass out

If you have an allergic reaction to SOLIRIS, your doctor may need to infuse SOLIRIS more slowly, or stop SOLIRIS. See “How will I receive SOLIRIS?”

**The most common side effects in people with PNH treated with SOLIRIS include:**

- headache
- pain or swelling of your nose or throat (nasopharyngitis)
- back pain
- nausea

**The most common side effects in people with aHUS treated with SOLIRIS include:**

- headache
- diarrhea
- high blood pressure (hypertension)
- common cold (upper respiratory infection)
- stomach-area (abdominal pain)
- vomiting
- pain or swelling of your nose or throat (nasopharyngitis)
- low red blood cell count (anemia)
- cough
- swelling of legs or feet (peripheral edema)
- nausea
- urinary tract infections
- fever

**The most common side effects in people with gMG treated with SOLIRIS include:**

- muscle and joint (musculoskeletal) pain

**The most common side effects in people with NMOSD treated with SOLIRIS include:**

- common cold (upper respiratory infection)
- pain or swelling of your nose or throat (nasopharyngitis)
- diarrhea
- back pain
- dizziness
- flu like symptoms (influenza) including fever, headache, tiredness, cough, sore throat, and body aches
- joint pain (arthralgia)
- throat irritation (pharyngitis)
- bruising (contusion)

Tell your doctor about any side effect that bothers you or that does not go away. These are not all the possible side effects of SOLIRIS. For more information, ask your doctor or pharmacist.

Call your doctor for medical advice about side effects. You may report side effects to FDA at 1-800-FDA-1088.

### General information about the safe and effective use of SOLIRIS.

Medicines are sometimes prescribed for purposes other than those listed in a Medication Guide. Do not use SOLIRIS for a condition for which it was not prescribed. Do not give SOLIRIS to other people, even if they have the same symptoms that you have. It may harm them. You can ask your pharmacist or doctor for information about SOLIRIS that is written for health professionals.

### What are the ingredients in SOLIRIS?

Active ingredient: eculizumab

Inactive ingredients: polysorbate 80 (vegetable origin), sodium chloride, sodium phosphate dibasic, sodium phosphate monobasic, and Water for Injection

Manufactured by Alexion Pharmaceuticals, Inc., 121 Seaport Boulevard, Boston, MA 02210 USA. US License Number 1743

This Medication Guide has been approved by the U.S. Food and Drug Administration  
Revised: 06/2019